

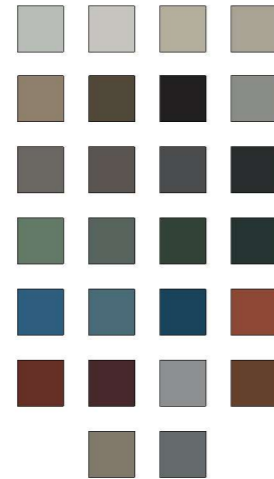
MODEL DISCIPLINE: Y - Specialist Manufacturer
 MODEL REFERENCE: 16-DD-TS-ZZ-M3-Y-2001-Wall_LOD300
 REVIT VERSION: Revit 2019.2.5

16Tapered Series-LOD300



Generic Model Schedule	
ColourRange_KS	
DRI-001	Stone White
DRI-002	Bone White
DRI-003	Almond
DRI-004	Sandstone
DRI-005	Sierra Tan
DRI-006	Medium Bronze
DRI-007	Dark Bronze
DRI-008	Cityscape
DRI-009	Slate Grey
DRI-010	Musket Grey
DRI-011	Charcoal
DRI-012	Matte Black
DRI-013	Arcadia Green
DRI-014	Hemlock Green
DRI-015	Forest Green
DRI-016	Hartford Green
DRI-017	Berkshire Blue
DRI-018	Military Blue
DRI-019	Interstate Blue
DRI-021	Terra Cotta
DRI-022	Colonial Red
DRI-023	Burgundy
DRI-025	Silver*
DRI-026	Copper Wire*
DRI-028	Champagne*
DRI-030	Weathered Zinc*

Dri-Design US Color Options



* Indicate Mica Paint

Custom Colors Available Upon Request





Facade System

Dri-Design

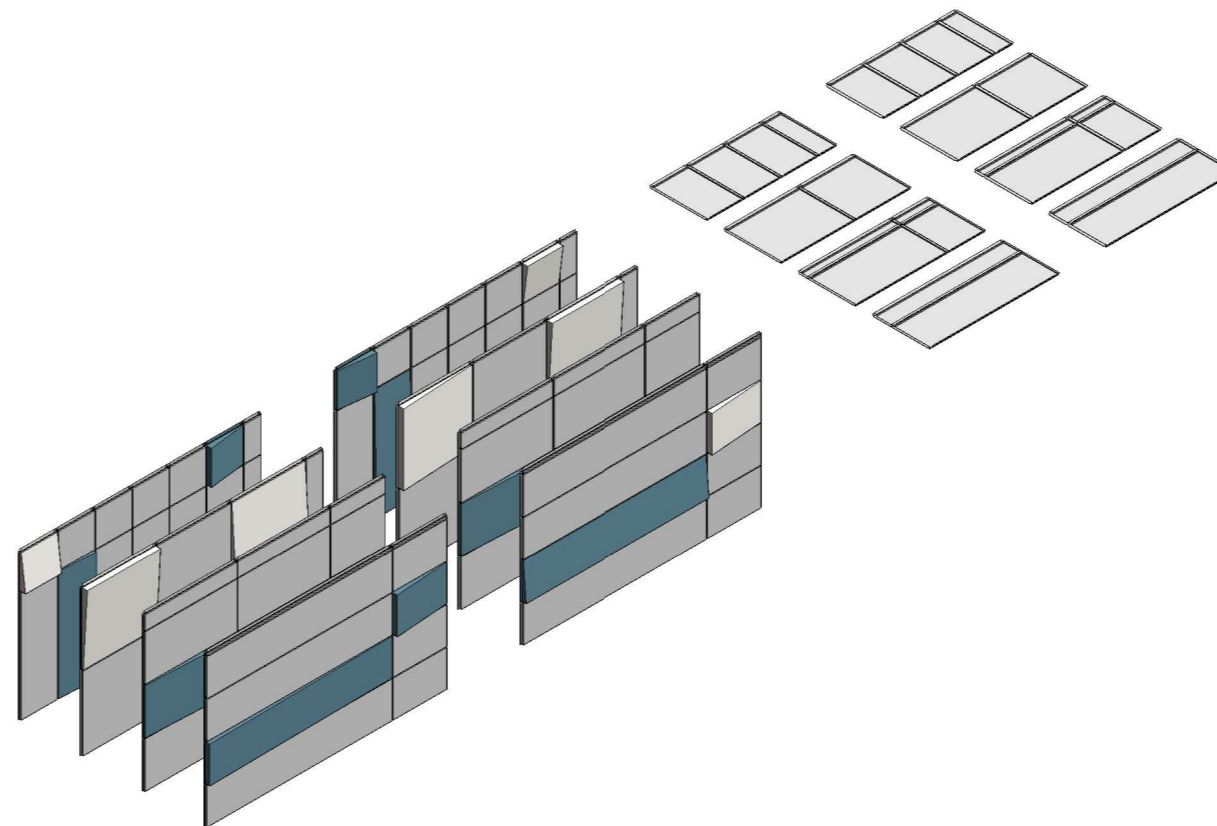
Dri-Design
 P.O. Box 1286
 Holland, Michigan 49422

Tel: (616) 355-2970

Email:
 Sales@Dri-Design.com

TAPERED SERIES

To be used only for building and premises design.
 Do not use for ordering.



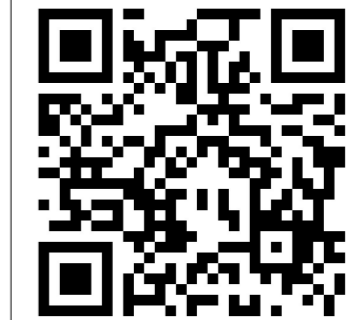
Wall Panel System

Dri Design
 P.O. Box 1286
 Holland, Michigan 49422
 Website: www.dri-design.com
 Email: bimdesigner@kingspan.com
 Sales@Dri-Design.com

Notes:
 FOR CONCEPTUAL DESIGN USE ONLY.
 NOT TO BE USED FOR MANUFACTURING

FIRE CLASSIFICATIONS ARE SUBJECT TO METHOD OF ASSEMBLY, ORIENTATION AND STEEL COATING. PLEASE CONSULT KINGSPAN TECHNICAL DEPARTMENT FOR DETAILS.

TO REQUEST A KINGSPAN REVIT SPECIFICATION PLEASE SCAN THE QR CODE BELOW AND COMPLETE THE ONLINE FORM



Rev	Description	Date
01	Issued for Information	01/11/2022
02	Revision 2	11/04/2024

CODE	SUITABILITY DESCRIPTION
S2-P02	Suitable for Information
STATUS	PURPOSE OF ISSUE
S2	Shared (Non-contractual)

CLIENT
 Kingspan Insulated Panels

PROJECT
 16Tapered Series-LOD300

DRAWING
 Project Overview

DRAWN BY	CHECKED BY	DATE
Author	Checker	11/04/2024

SCALE (@ A1)	ISO 19650 - PROJECT NUMBER
	01-DD-TS-ZZ-DR-Y-0001

KINGSPAN - DRAWING NUMBER	REV
DD-TS-Wall-0001	02

This drawing is the property of Kingspan and may not be reproduced in any way without written consent from Kingspan.

MODEL DISCIPLINE: Y - Specialist Manufacturer
 MODEL REFERENCE: 16-DD-TS-ZZ-M3-Y-2001-Wall_LOD300
 REVIT VERSION: Revit 2019.2.5

16Tapered Series-LOD300



Wall Panel System

Dri Design
 P.O. Box 1286
 Holland, Michigan 49422
 Website: www.dri-design.com
 Email: bimdesigner@kingspan.com
 Sales@Dri-Design.com

Notes:
 FOR CONCEPTUAL DESIGN USE ONLY.
 NOT TO BE USED FOR MANUFACTURING
 FIRE CLASSIFICATIONS ARE SUBJECT TO METHOD OF ASSEMBLY, ORIENTATION AND STEEL COATING.
 PLEASE CONSULT KINGSPAN TECHNICAL DEPARTMENT FOR DETAILS.

TO REQUEST A KINGSPAN REVIT SPECIFICATION PLEASE SCAN THE QR CODE BELOW AND COMPLETE THE ONLINE FORM



Rev	Description	Date
01	Issued for Information	01/11/2022
02	Revision 2	11/04/2024

CODE	SUITABILITY DESCRIPTION
S2-P02	Suitable for Information
STATUS	PURPOSE OF ISSUE
S2	Shared (Non-contractual)

CLIENT
 Kingspan Insulated Panels

PROJECT
 16Tapered Series-LOD300

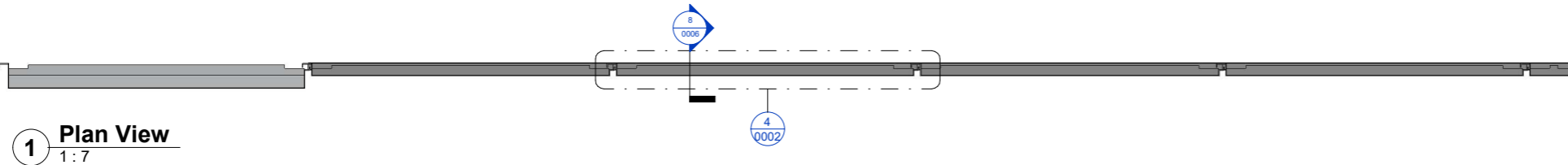
DRAWING
 Plans, Sections & Elevations

DRAWN BY	CHECKED BY	DATE
Author	Checker	11/04/2024

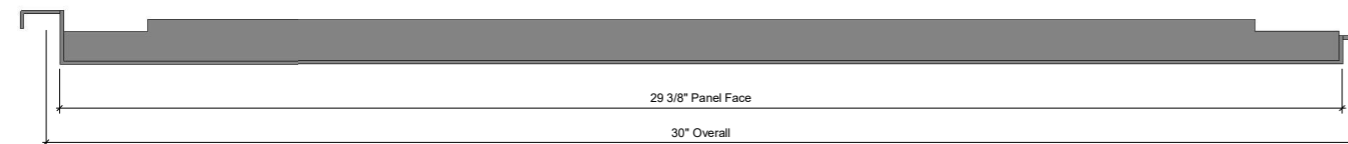
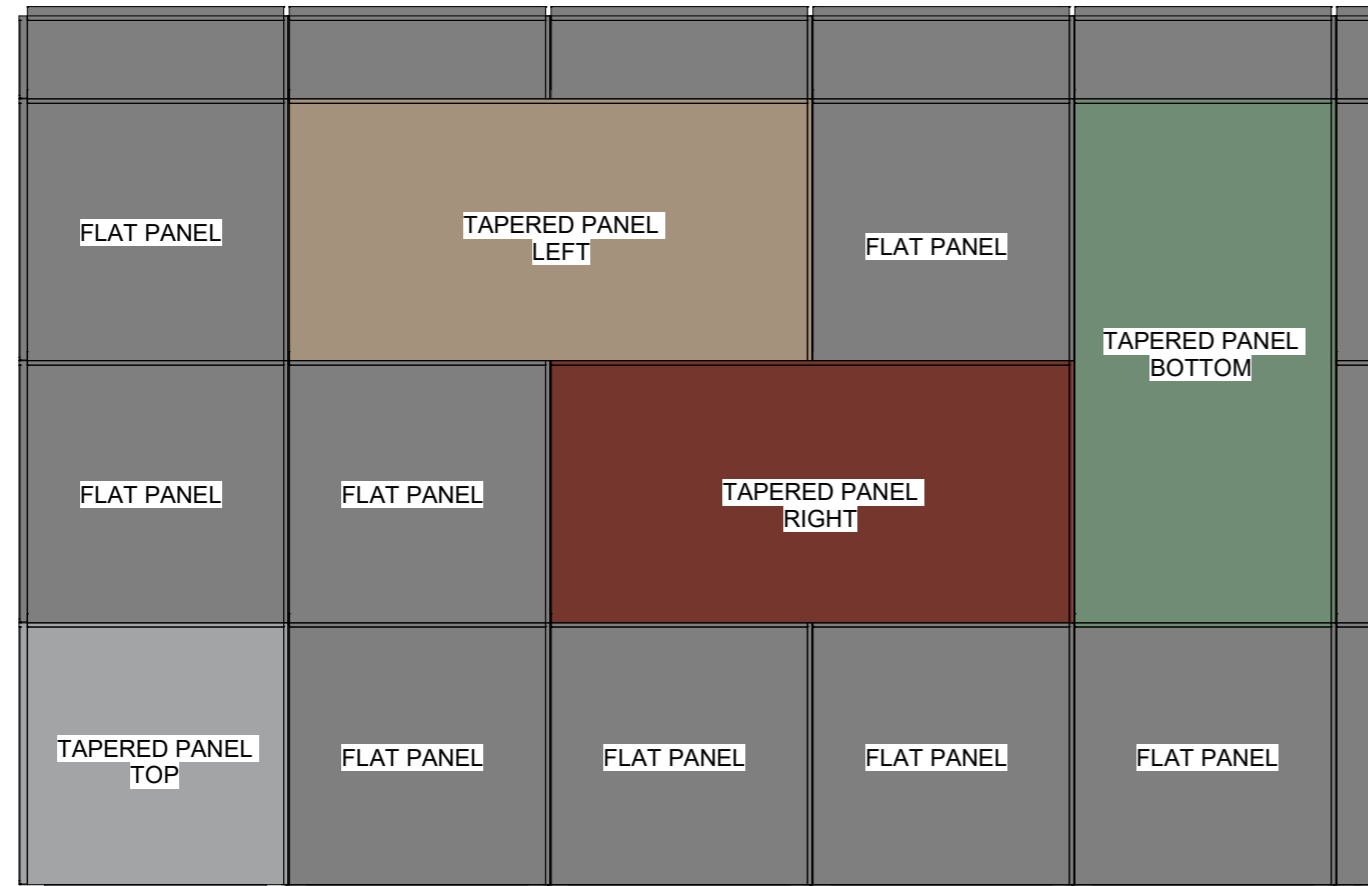
SCALE (@ A1)	ISO 19650 - PROJECT NUMBER
As indicated	01-DD-TS-ZZ-DR-Y-0002

KINGSPAN - DRAWING NUMBER	REV
DD-TS-Wall-0002	02

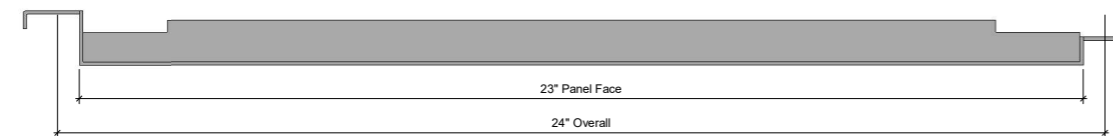
This drawing is the property of Kingspan and may not be reproduced in any way without written consent from Kingspan.



1 Plan View
 1:7



4 Panel Plan View - 5/8" Vertical Joint
 6" = 1'-0"



5 Panel Plan View - 1" Vertical Joint
 6" = 1'-0"

3 Section View
 1:5

MODEL DISCIPLINE: Y - Specialist Manufacturer
 MODEL REFERENCE: 16-DD-TS-ZZ-M3-Y-2001-Wall_LOD300
 REVIT VERSION: Revit 2019.2.5

16Tapered Series-LOD300



Wall Panel System

Dri Design
 P.O. Box 1286
 Holland, Michigan 49422
 Website: www.dri-design.com
 Email: bimdesigner@kingspan.com
 Sales@Dri-Design.com

Notes:
 FOR CONCEPTUAL DESIGN USE ONLY.
 NOT TO BE USED FOR MANUFACTURING

 FIRE CLASSIFICATIONS ARE SUBJECT TO METHOD OF ASSEMBLY, ORIENTATION AND STEEL COATING.
 PLEASE CONSULT KINGSPAN TECHNICAL DEPARTMENT FOR DETAILS.

TO REQUEST A KINGSPAN REVIT SPECIFICATION PLEASE SCAN THE QR CODE BELOW AND COMPLETE THE ONLINE FORM



Rev	Description	Date
01	Issued for Information	01/11/2022
02	Revision 2	11/04/2024

CODE	SUITABILITY DESCRIPTION
S2-P02	Suitable for Information
STATUS	PURPOSE OF ISSUE
S2	Shared (Non-contractual)

CLIENT
 Kingspan Insulated Panels

PROJECT
 16Tapered Series-LOD300

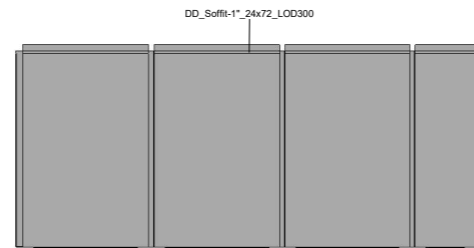
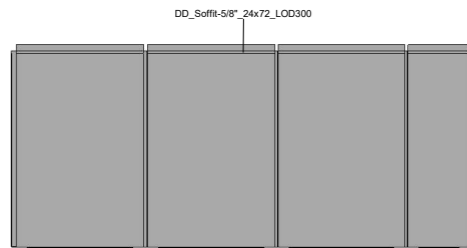
DRAWING
 Soffit Panels

DRAWN BY	CHECKED BY	DATE
Author	Checker	11/04/2024

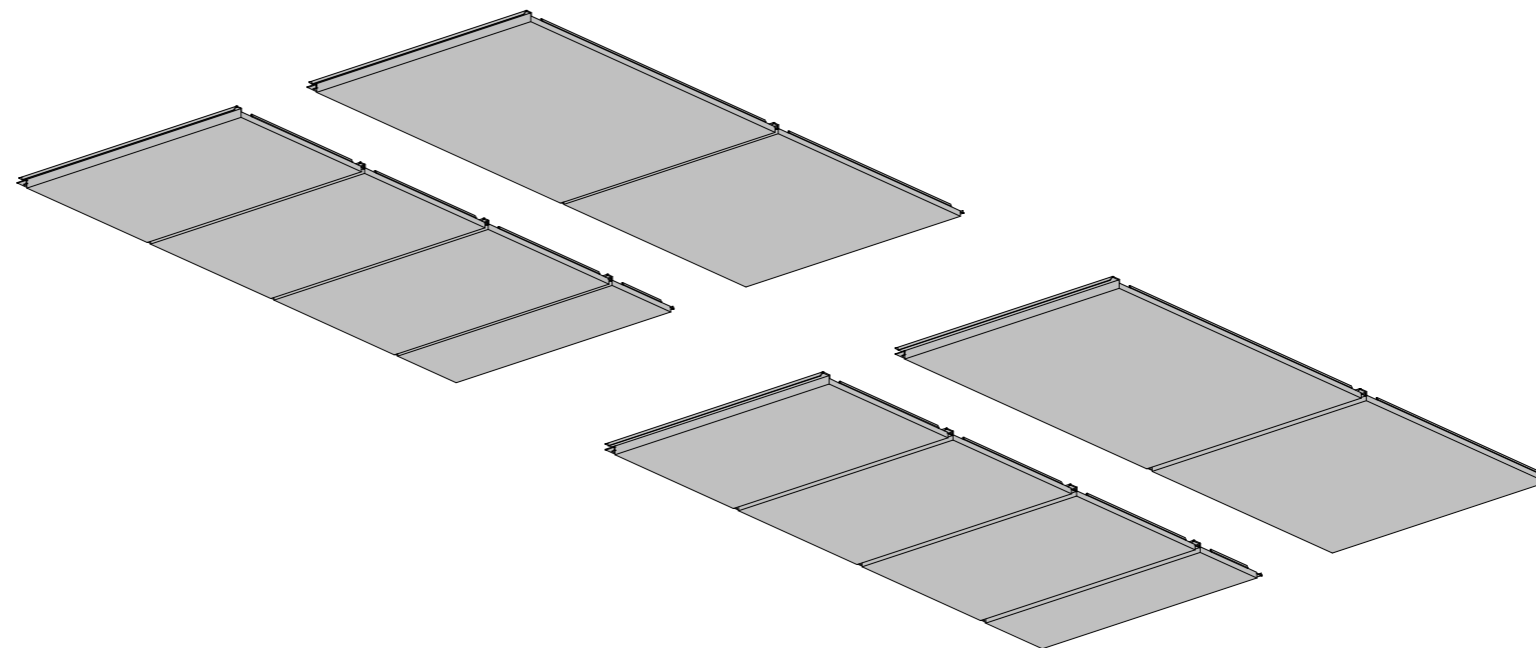
SCALE (@ A1)	ISO 19650 - PROJECT NUMBER
3/4" = 1'-0"	01-DD-TS-ZZ-DR-Y-0003

KINGSPAN - DRAWING NUMBER	REV
DD-TS-Wall-0003	02

This drawing is the property of Kingspan and may not be reproduced in any way without written consent from Kingspan.



1 Soffit Types
 3/4" = 1'-0"



MODEL DISCIPLINE: Y - Specialist Manufacturer
 MODEL REFERENCE: 16-DD-TS-ZZ-M3-Y-2001-Wall_LOD300
 REVIT VERSION: Revit 2019.2.5

16Tapered Series-LOD300



Wall Panel System

Dri Design
 P.O. Box 1286
 Holland, Michigan 49422
 Website: www.dri-design.com
 Email: bimdesigner@kingspan.com
 Sales@Dri-Design.com

Notes:
 FOR CONCEPTUAL DESIGN USE ONLY.
 NOT TO BE USED FOR MANUFACTURING
 FIRE CLASSIFICATIONS ARE SUBJECT TO METHOD OF ASSEMBLY, ORIENTATION AND STEEL COATING.
 PLEASE CONSULT KINGSPAN TECHNICAL DEPARTMENT FOR DETAILS.

TO REQUEST A KINGSPAN REVIT SPECIFICATION PLEASE SCAN THE QR CODE BELOW AND COMPLETE THE ONLINE FORM



Rev	Description	Date
01	Issued for Information	01/11/2022
02	Revision 2	11/04/2024

CODE	SUITABILITY DESCRIPTION
S2-P02	Suitable for Information
STATUS	PURPOSE OF ISSUE
S2	Shared (Non-contractual)

CLIENT
 Kingspan Insulated Panels

PROJECT
 16Tapered Series-LOD300

DRAWING
 Standard Panel Size Configurations

DRAWN BY	CHECKED BY	DATE
Author	Checker	11/04/2024

SCALE (@ A1)	ISO 19650 - PROJECT NUMBER
As indicated	01-DD-TS-ZZ-DR-Y-0004

KINGSPAN - DRAWING NUMBER	REV
DD-TS-Wall-0004	02

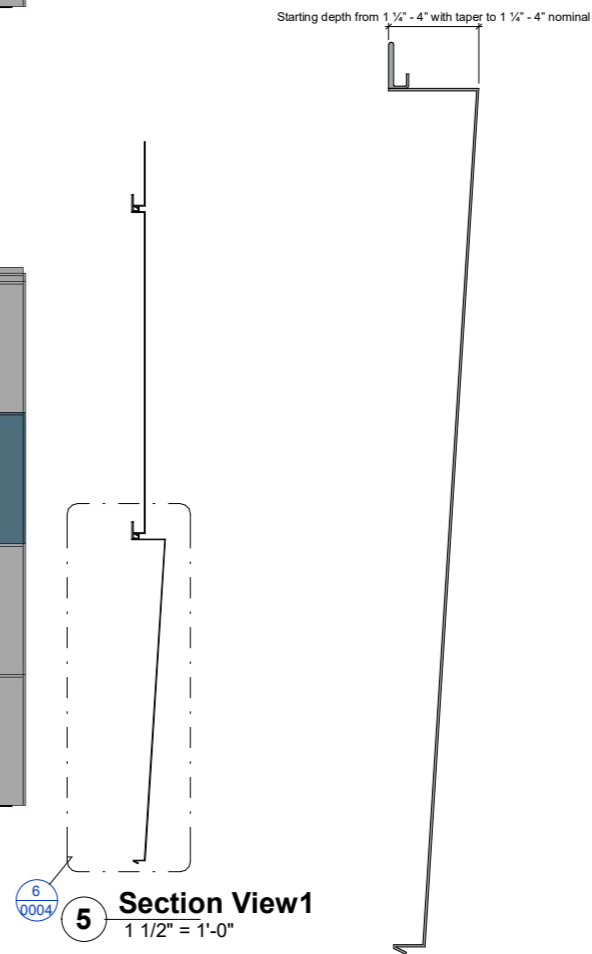
This drawing is the property of Kingspan and may not be reproduced in any way without written consent from Kingspan.

Panel Size Parameters:

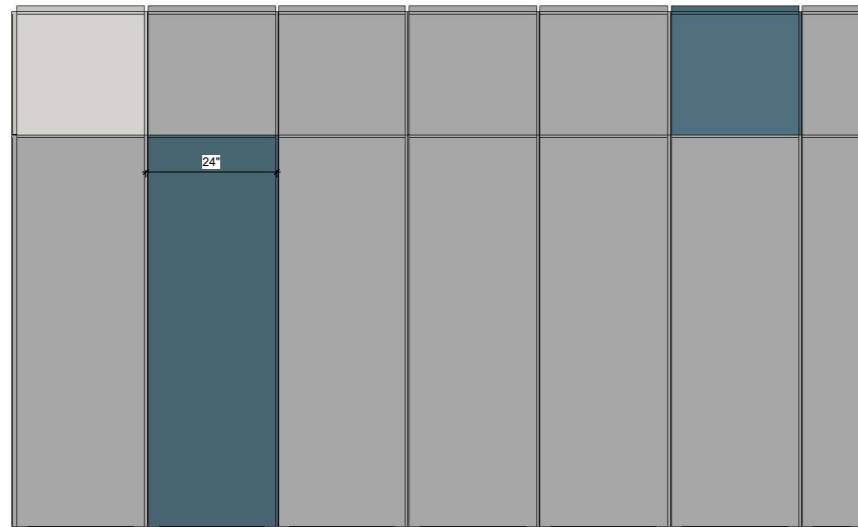
Height (H):
 H > 4"
 W < 24": H < 120"
 24" < W < 30": H < 60"
 30" < W < 48": H < 48"
 48" < W < 60": H < 30"
 60" < W < 120": H < 24"
 Width (W):
 W > 4"
 H < 24": W < 120"
 24" < H < 30": W < 60"
 30" < H < 48": W < 48"
 48" < H < 60": W < 30"
 60" < H < 120": W < 24"

These are the recommended maximum size panel guides. If the panel you would like fits inside these guides, Dri-Design can easily manufacture it. For larger sizes, please contact a Dri-Design representative to discuss your specific requirements.

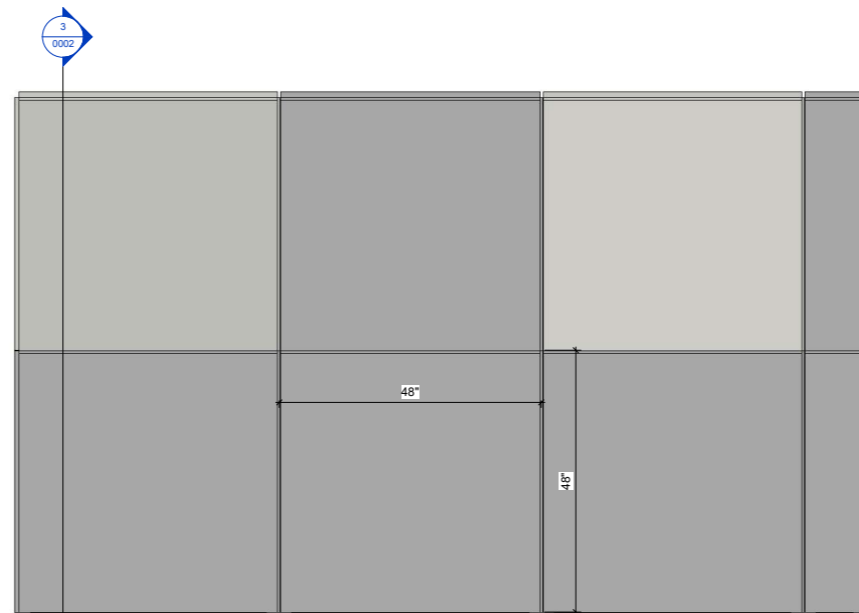
Starting depth from 1 1/4" - 4" with taper to 1 1/2" - 4" nominal



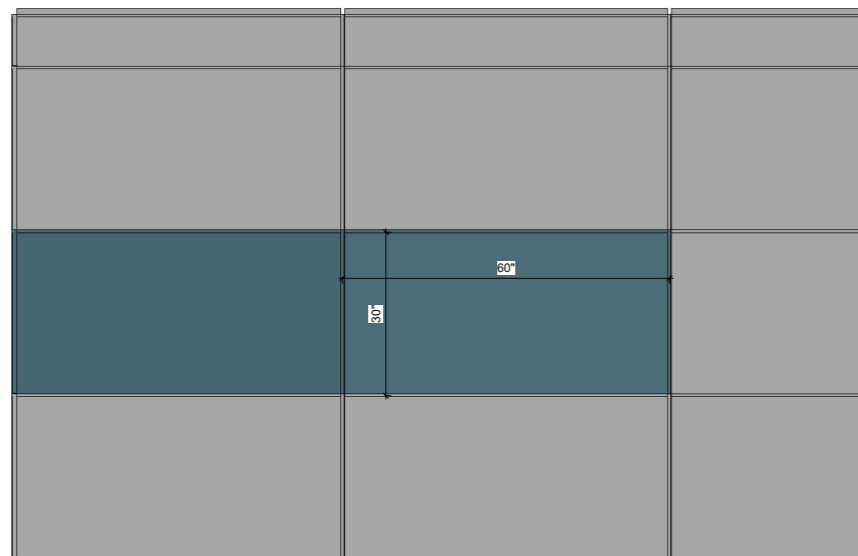
6 Tapered Panel
 1 : 3



1 24"x72"
 3/4" = 1'-0"



2 48"x48"
 3/4" = 1'-0"



3 60"x30"
 3/4" = 1'-0"



4 120"x24"
 3/4" = 1'-0"

MODEL DISCIPLINE: Y - Specialist Manufacturer
 MODEL REFERENCE: 16-DD-TS-ZZ-M3-Y-2001-Wall_LOD300
 REVIT VERSION: Revit 2019.2.5

16Tapered Series-LOD300

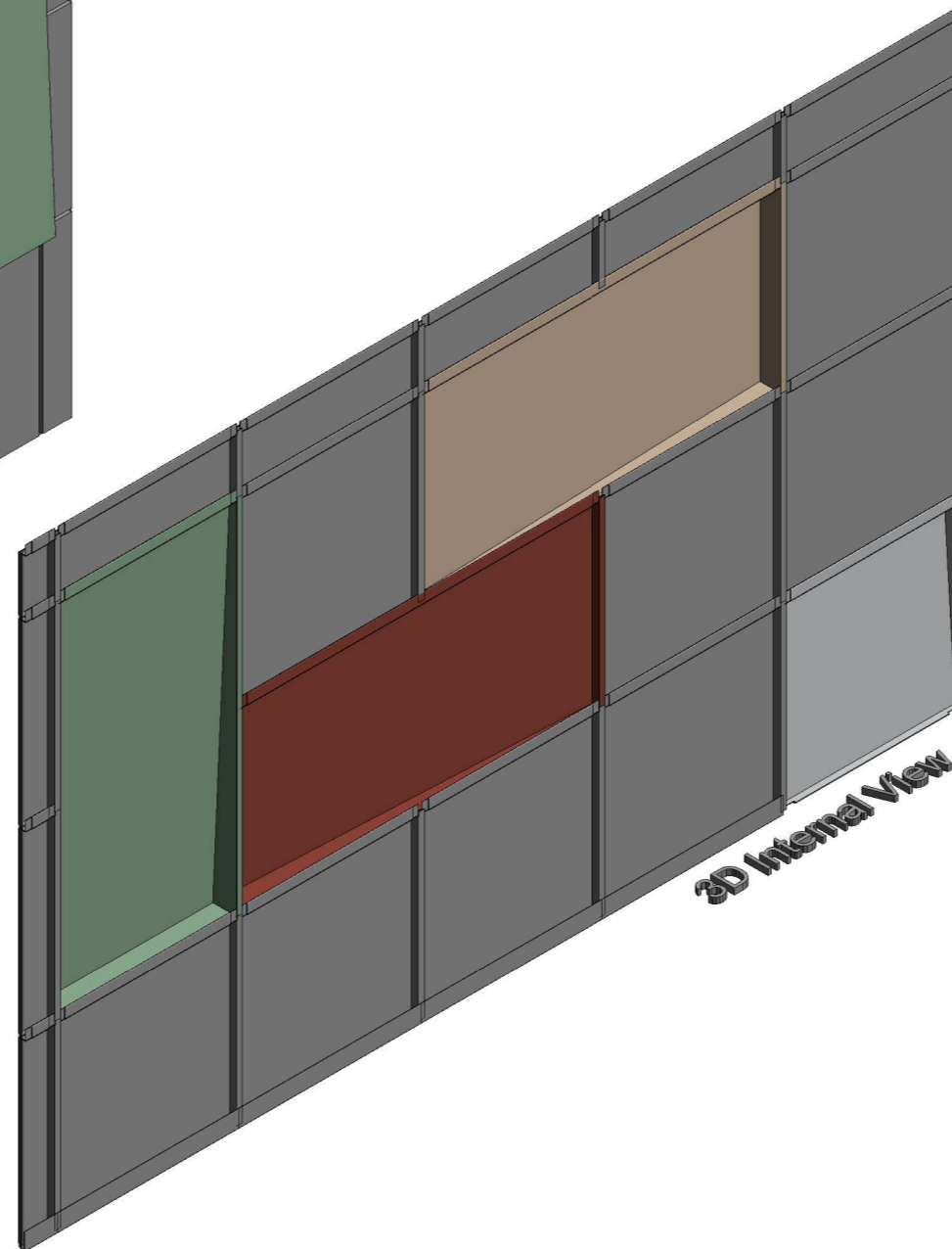
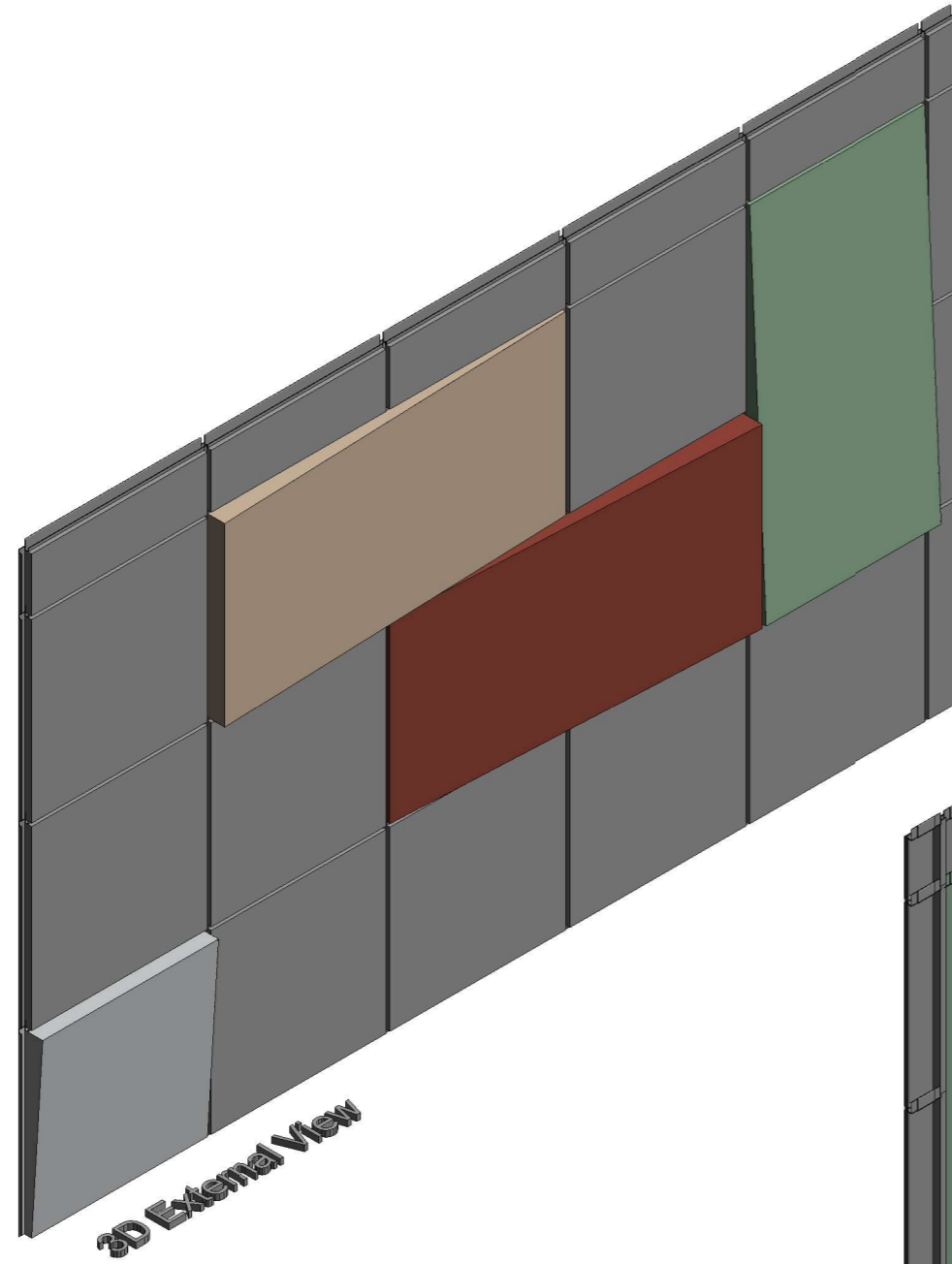


Wall Panel System

Dri Design
 P.O. Box 1286
 Holland, Michigan 49422
 Website: www.dri-design.com
 Email: bimdesigner@kingspan.com
 Sales@Dri-Design.com

Notes:
 FOR CONCEPTUAL DESIGN USE ONLY.
 NOT TO BE USED FOR MANUFACTURING
 FIRE CLASSIFICATIONS ARE SUBJECT TO METHOD OF ASSEMBLY, ORIENTATION AND STEEL COATING.
 PLEASE CONSULT KINGSPAN TECHNICAL DEPARTMENT FOR DETAILS.

TO REQUEST A KINGSPAN REVIT SPECIFICATION PLEASE SCAN THE QR CODE BELOW AND COMPLETE THE ONLINE FORM



Rev	Description	Date
01	Issued for Information	01/11/2022
02	Revision 2	11/04/2024

CODE	SUITABILITY DESCRIPTION
S2-P02	Suitable for Information
STATUS	PURPOSE OF ISSUE
S2	Shared (Non-contractual)

CLIENT
 Kingspan Insulated Panels

PROJECT
 16Tapered Series-LOD300

DRAWING
 3D Views

DRAWN BY	CHECKED BY	DATE
Author	Checker	11/04/2024

SCALE (@ A1)	ISO 19650 - PROJECT NUMBER
	01-DD-TS-ZZ-DR-Y-0005

KINGSPAN - DRAWING NUMBER	REV
DD-TS-Wall-0005	02

This drawing is the property of Kingspan and may not be reproduced in any way without written consent from Kingspan.

MODEL DISCIPLINE: Y - Specialist Manufacturer
 MODEL REFERENCE: 16-DD-TS-ZZ-M3-Y-2001-Wall_LOD300
 REVIT VERSION: Revit 2019.2.5

16Tapered Series-LOD300

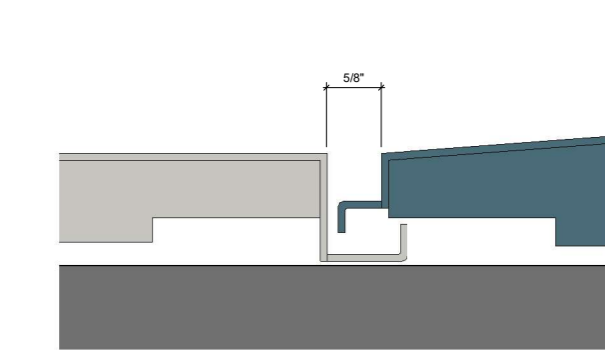


Wall Panel System

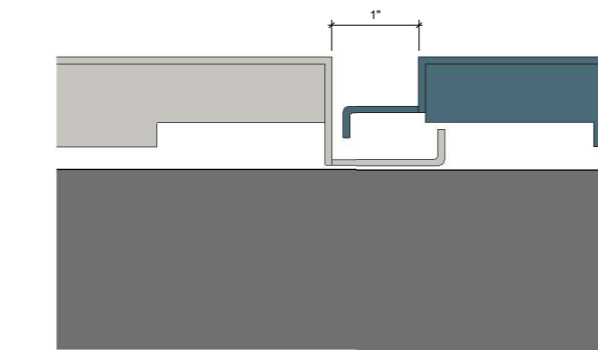
Dri Design
 P.O. Box 1286
 Holland, Michigan 49422
 Website: www.dri-design.com
 Email: bimdesigner@kingspan.com
 Sales@Dri-Design.com

Notes:
 FOR CONCEPTUAL DESIGN USE ONLY.
 NOT TO BE USED FOR MANUFACTURING
 FIRE CLASSIFICATIONS ARE SUBJECT TO METHOD OF ASSEMBLY, ORIENTATION AND STEEL COATING.
 PLEASE CONSULT KINGSPAN TECHNICAL DEPARTMENT FOR DETAILS.

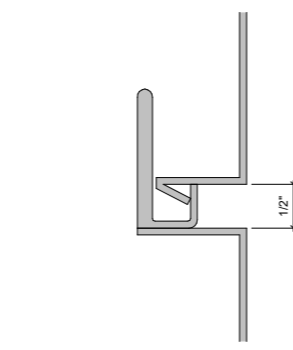
TO REQUEST A KINGSPAN REVIT SPECIFICATION PLEASE SCAN THE QR CODE BELOW AND COMPLETE THE ONLINE FORM



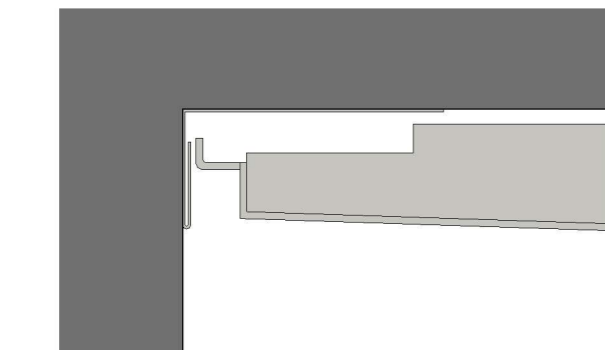
1 5/8" VERTICAL JOINT DETAIL
 12" = 1'-0"



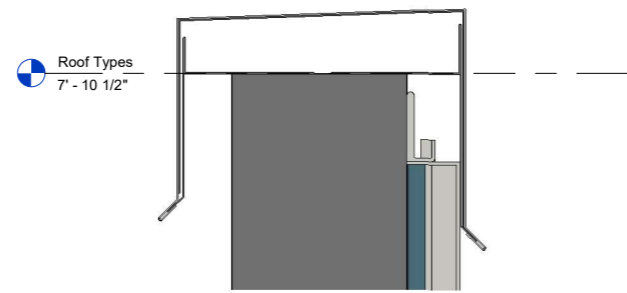
2 1" VERTICAL JOINT DETAIL
 12" = 1'-0"



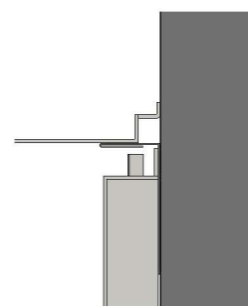
3 1/2" HORIZONTAL JOINT DETAIL
 12" = 1'-0"



4 JAMB TERMINATION DETAIL
 12" = 1'-0"



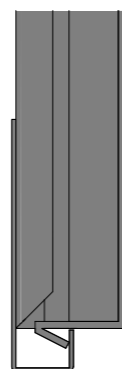
5 OVERLAP COPING/ HEAD DETAIL
 6" = 1'-0"



6 PANEL HEAD DETAIL AT SOFFIT
 6" = 1'-0"



7 OUTSIDE FORMED CORNER DETAIL
 1 : 3



8 PANEL BASE DETAIL - J-SUPPORT
 12" = 1'-0"

Rev	Description	Date
01	Issued for Information	01/11/2022
02	Revision 2	11/04/2024

CODE	SUITABILITY DESCRIPTION
S2-P02	Suitable for Information
STATUS	PURPOSE OF ISSUE
S2	Shared (Non-contractual)

CLIENT
 Kingspan Insulated Panels

PROJECT
 16Tapered Series-LOD300

DRAWING
 Panel Details

DRAWN BY	CHECKED BY	DATE
Author	Checker	11/04/2024

SCALE (@ A1)	ISO 19650 - PROJECT NUMBER
As indicated	01-DD-TS-ZZ-DR-Y-0006

KINGSPAN - DRAWING NUMBER	REV
DD-TS-Wall-0006	02

This drawing is the property of Kingspan and may not be reproduced in any way without written consent from Kingspan.

MODEL DISCIPLINE: Y - Specialist Manufacturer
 MODEL REFERENCE: 16-DD-TS-ZZ-M3-Y-2001-Wall_LOD300
 REVIT VERSION: Revit 2019.2.5

16Tapered Series-LOD300



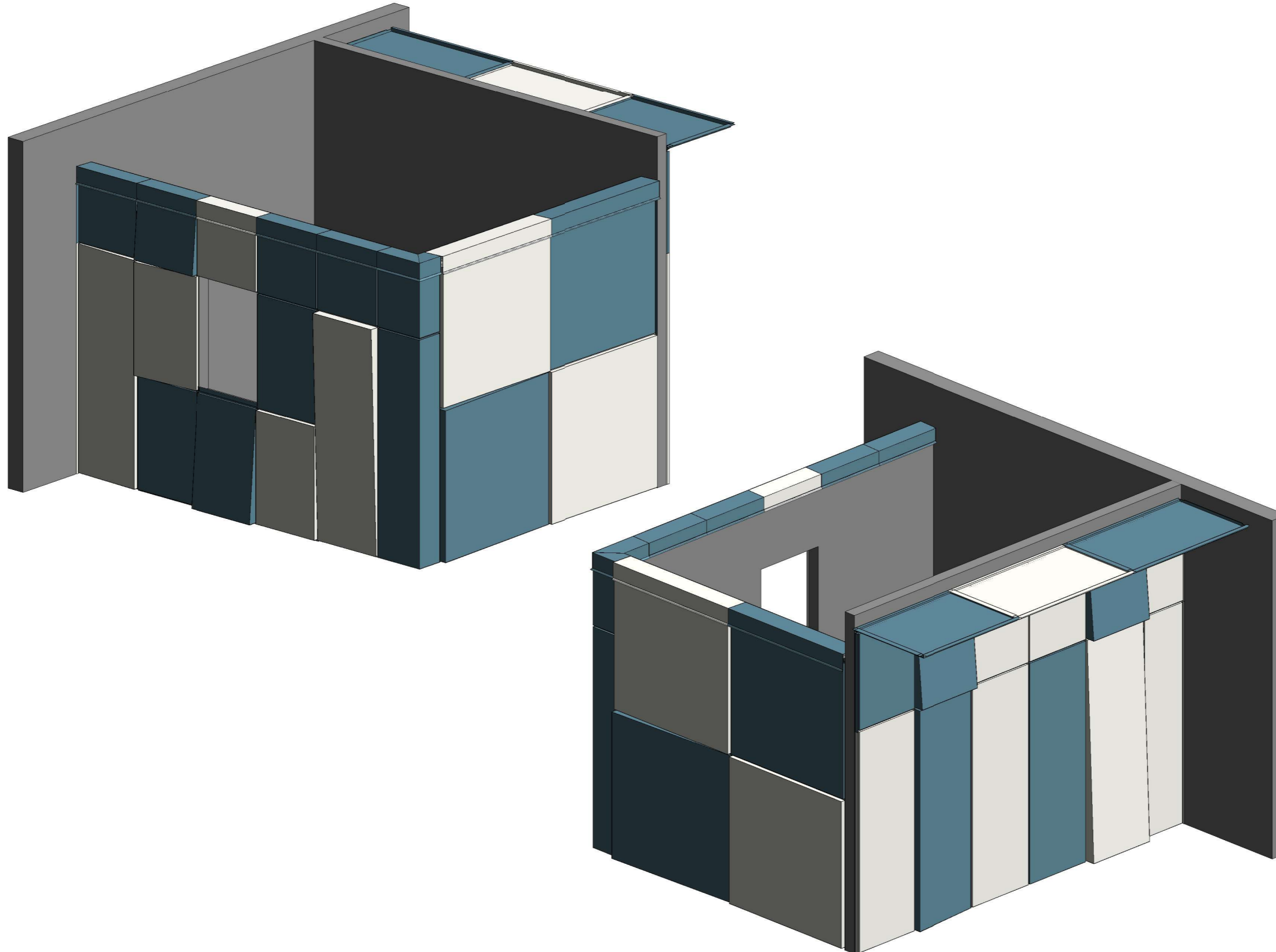
Wall Panel System

Dri Design
 P.O. Box 1286
 Holland, Michigan 49422
 Website: www.dri-design.com
 Email: bimdesigner@kingspan.com
 Sales@Dri-Design.com

Notes:
 FOR CONCEPTUAL DESIGN USE ONLY.
 NOT TO BE USED FOR MANUFACTURING

 FIRE CLASSIFICATIONS ARE SUBJECT TO METHOD OF
 ASSEMBLY, ORIENTATION AND STEEL COATING.
 PLEASE CONSULT KINGSPAN TECHNICAL DEPARTMENT
 FOR DETAILS.

TO REQUEST A KINGSPAN
 REVIT SPECIFICATION PLEASE
 SCAN THE QR CODE BELOW
 AND COMPLETE THE ONLINE
 FORM



Rev	Description	Date
01	Issued for Information	01/11/2022
02	Revision 2	11/04/2024

CODE	SUITABILITY DESCRIPTION
S2-P02	Suitable for Information
STATUS	PURPOSE OF ISSUE
S2	Shared (Non-contractual)

CLIENT
 Kingspan Insulated Panels

PROJECT
 16Tapered Series-LOD300

DRAWING
 3D Dri-Design Junction Box

DRAWN BY	CHECKED BY	DATE
Author	Checker	11/04/2024
SCALE (@ A1)	ISO 19650 - PROJECT NUMBER	
	01-DD-TS-ZZ-DR-Y-0007	

KINGSPAN - DRAWING NUMBER	REV
DD-TS-Wall-0007	02

This drawing is the property of Kingspan and may not be reproduced in any way without written consent from Kingspan.