

Introducing

MA-X™

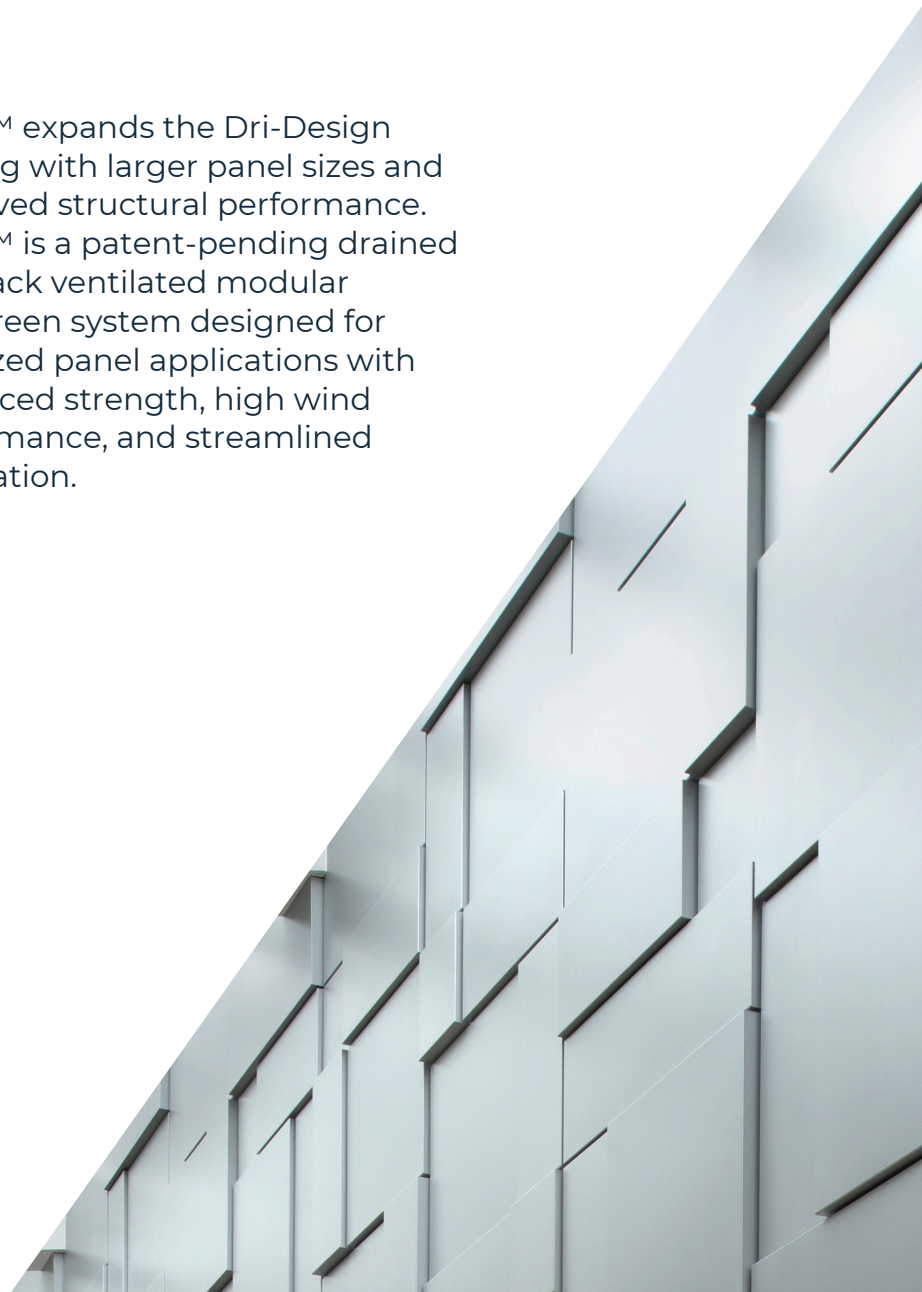
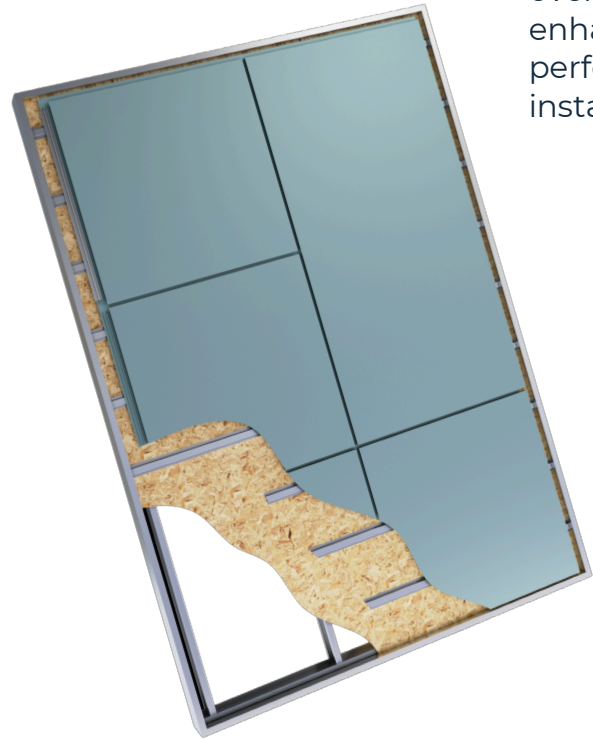
Larger Format Panels.
Stronger Performance.

A bold, larger-format panel solution that combines expanded design possibilities with the proven performance and structural integrity of Dri-Design.

 **dri-**
design®
By Kingspan

MA-X™

MA-X™ expands the Dri-Design offering with larger panel sizes and improved structural performance. MA-X™ is a patent-pending drained and back ventilated modular rainscreen system designed for oversized panel applications with enhanced strength, high wind performance, and streamlined installation.



Bigger Panels. Better Design. Engineered for Performance.

Expansive Panel Sizes

Create bold, uninterrupted facades with fewer panels and cleaner sight lines. Up to 12' x 4' standard panel sizes.

Maintains Visual Flatness

Engineered to deliver a smooth, uniform surface that minimizes oil canning and preserves the intended facade appearance.

High Wind Performance

Engineered to perform in demanding wind conditions, delivering confidence, durability, and long-term reliability.

Simplified Installation

Sequential modular installation minimizes coordination and complexity.

No Sealants. No Gaskets.

Eliminates maintenance-prone materials for a cleaner, more durable facade.

Solid Metal Construction

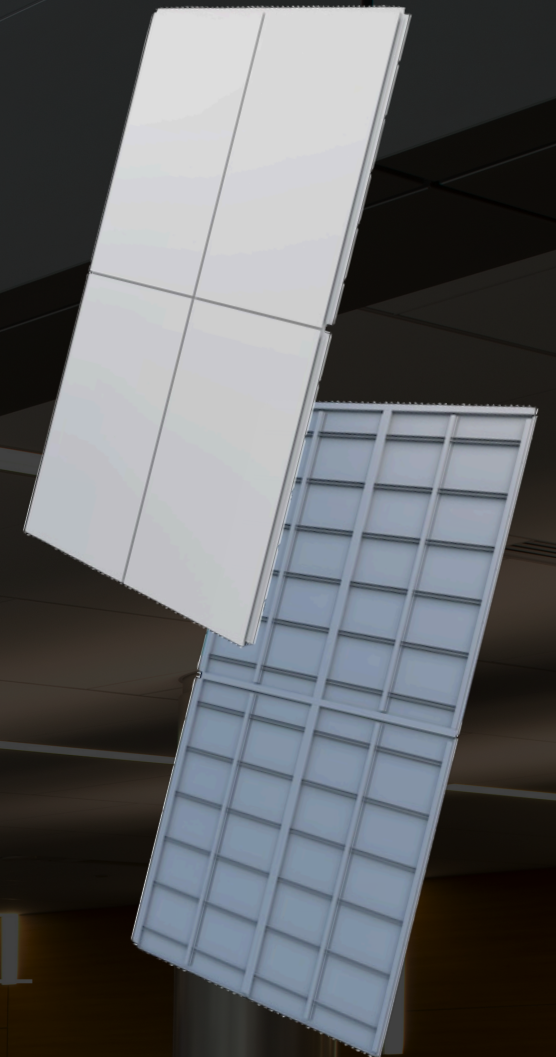
Single-skin panels remove the risk of delamination and long-term material failure.

Non-Combustible

Provides inherent fire resistance for added safety and peace of mind.

Predictable Project Outcomes

Delivers consistent performance in design, fabrication, and installation, reducing risk, rework, and uncertainty across the project.



Technical Information:

System Type - Drained and Back Ventilated (D/BV)

Material - Aluminum

Installation - Sequential modular rainscreen

Material Thickness - .063" and .080" aluminum

Maximum Standard Size - Up to 12' x 4'

Configurations - Flat and Shadow Series

Orientation - Vertical or Horizontal

Wind Performance - Up to 130 PSF

Finish - Popular and Premium Colors, Anodized

Optional cleat design - greater structural performance. Patent pending.

HVHZ, Impact Testing, and FL Product approved on select configurations.

dri-



For the most up-to-date version of this document, please scan or [click here](#).

For the product offering in other markets please contact your local sales representative or visit www.dri-design.com.

To ensure you are viewing the most recent and accurate product information, please visit www.dri-design.com. Care has been taken to ensure that the contents of this publication are accurate, but Kingspan Limited and its subsidiary companies do not accept responsibility for errors or for information that is found to be misleading.

Suggestions for, or description of, the end use or application of products or methods of working are for information only and Dri-Design, Inc. accept no liability in respect thereof. Trademarks of the Dri-Design plc in the US, Canada and other countries.

© Dri-Design Inc., A Kingspan Group Company

Issue V1: 06/01/2026

