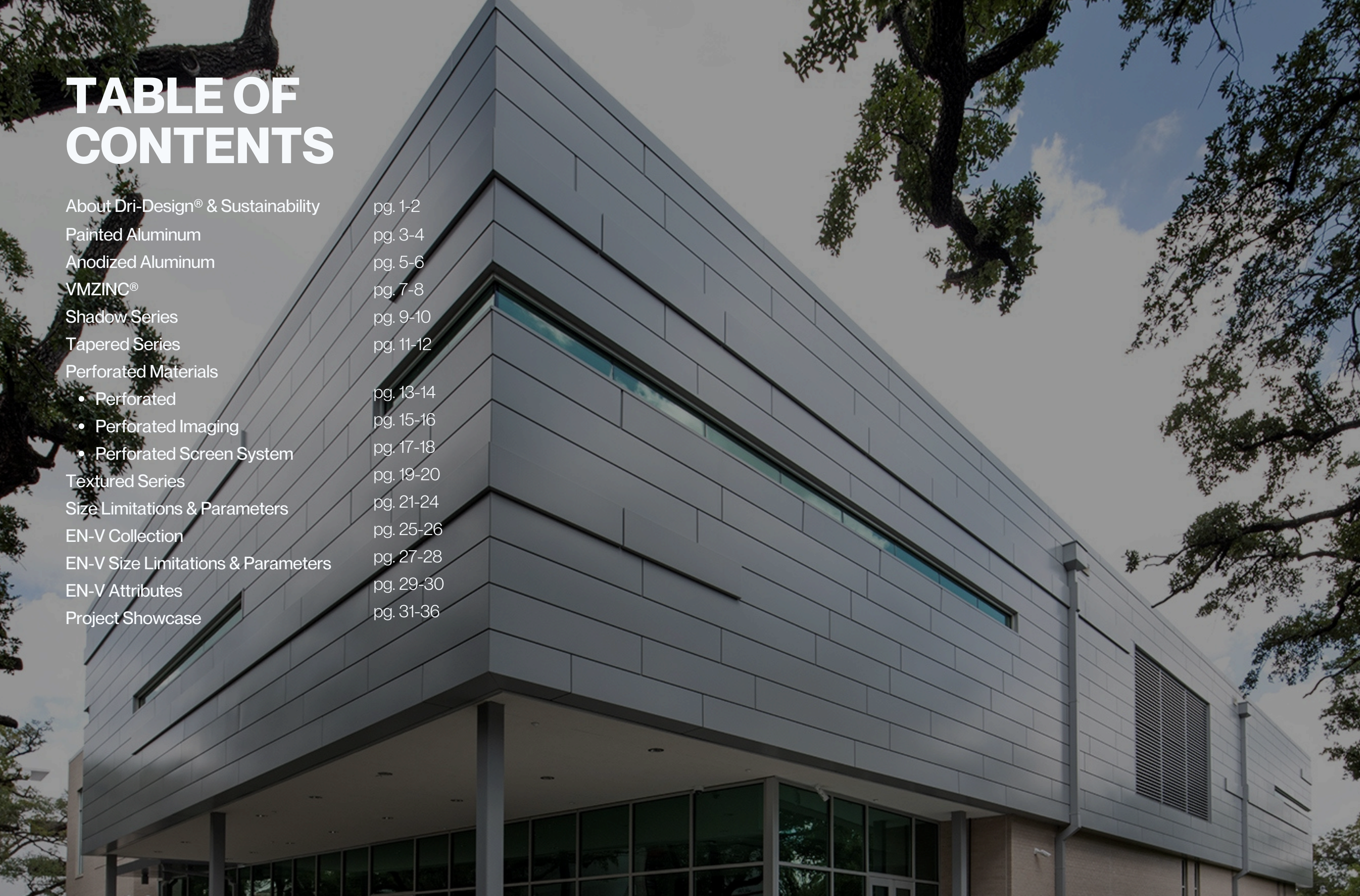


DESIGN GUIDE



TABLE OF CONTENTS

About Dri-Design® & Sustainability	pg. 1-2
Painted Aluminum	pg. 3-4
Anodized Aluminum	pg. 5-6
VMZINC®	pg. 7-8
Shadow Series	pg. 9-10
Tapered Series	pg. 11-12
Perforated Materials	
• Perforated	pg. 13-14
• Perforated Imaging	pg. 15-16
• Perforated Screen System	pg. 17-18
Textured Series	pg. 19-20
Size Limitations & Parameters	pg. 21-24
EN-V Collection	pg. 25-26
EN-V Size Limitations & Parameters	pg. 27-28
EN-V Attributes	pg. 29-30
Project Showcase	pg. 31-36



DRI-DESIGN ADVANTAGES



ONE CONTINUOUS METAL PANEL

Our advantage is in the design of our metal panel system.

NO DELAMINATION

Dri-Design® panels are NOT laminated, therefore will NOT delaminate, ensuring long-lasting structural integrity.

NO PLASTICS

Our single-skin technology stands out from ACM competitors by not having a plastic core. This feature contributes to conservation efforts by helping save fossil fuels.

NO SILICONE SEALANTS OR GASKETS

Dri-Design® eliminates the need for petroleum-based joint sealants or gaskets, ensuring no streaking and saving both fossil fuels and future maintenance costs.

NON-COMBUSTIBLE

Our metal panels are non-combustible and are **NFPA 285 compliant**.

Please consult a technical advisor within our company regarding NFPA 285 compliant wall design



Our mission is to accelerate a net-zero emissions future-built environment with people and planet at its heart.



COMMITTED TO SUSTAINABILITY



Reduce our carbon footprint

- Achieve net zero carbon manufacturing by 2030
- 50% reduction in product CO2e intensity from our primary supply partners by 2030
- Zero emission company funded cars by 2025



Increase the use of renewable energy

- 60% direct renewable energy use by 2030
- 20% on-site renewable energy generated by 2030
- Solar PV systems on all wholly owned facilities by 2030



Increase recycling and lower waste

- Zero company waste to landfill by 2030
- 1 billion PET bottles recycled into our manufacturing processes by 2025



Harvest rainwater and support ocean clean-up

- Harvest 100 million liters of rainwater annually by 2030
- Support 5 ocean clean-up projects by 2025



For the latest and most accurate information, please visit our website.





Painted Aluminum

Dri-Design® Painted Aluminum Panels offer the ultimate design flexibility for exterior and interior applications. Panels are painted using industry leading Fluoropolymer based paints for long lasting finish durability, while our finishers use a 100% air capture system to destroy the VOCs produced, so there is no adverse environmental impact

Technical Information:

System Depth - 1 1/4" nominal

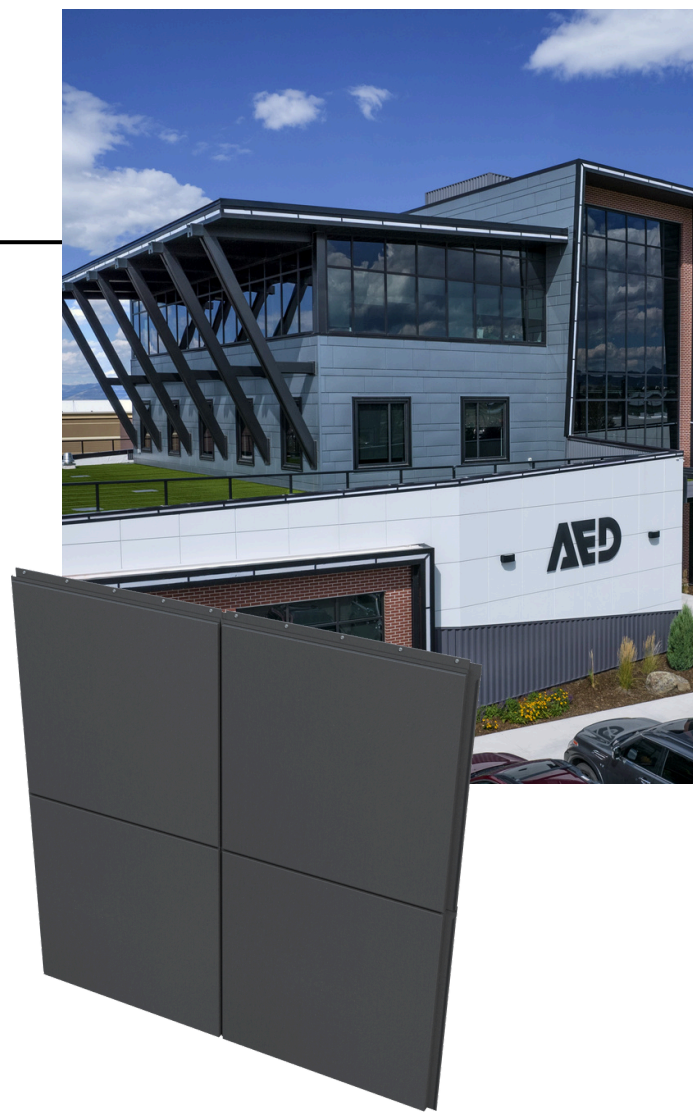
Material Thickness - 0.080" Aluminum

Panel Joints - 1/2" Horizontal, 5/8" Standard

Please consult technical advisor for custom panel joints

Finish - Fluoropolymer

Finish Warranty - Up to 20 years



For the latest and most accurate information, please visit our website.

Anodized Aluminum

Anodizing seamlessly blends science and nature, using natural oxidation and electricity to create a stunning finish that enhances the inherent beauty and unique variations of aluminum.

Technical Information:

- System Depth** - 1 1/4" nominal
- Material** - Aluminum
- Material Thickness** - 0.080" standard (other gauges available)
- Panel Joints** - 1/2" Horizontal, 5/8" Standard
- *Please consult technical advisor for custom panel joints*
- Finish** - Black, Bordeaux Anodized, Bronze, Champagne, Clear, and Copper
- Finish Warranty** - 5 year standard (10 year available)
- Weight** - Less than 2 pounds per square foot



For the latest and most accurate information, please visit our website.

Copper Anodized

Copper Anodized Aluminum is a unique, proprietary finish that replicates the appearance of copper while retaining the durability and performance characteristics of anodized aluminum panels.

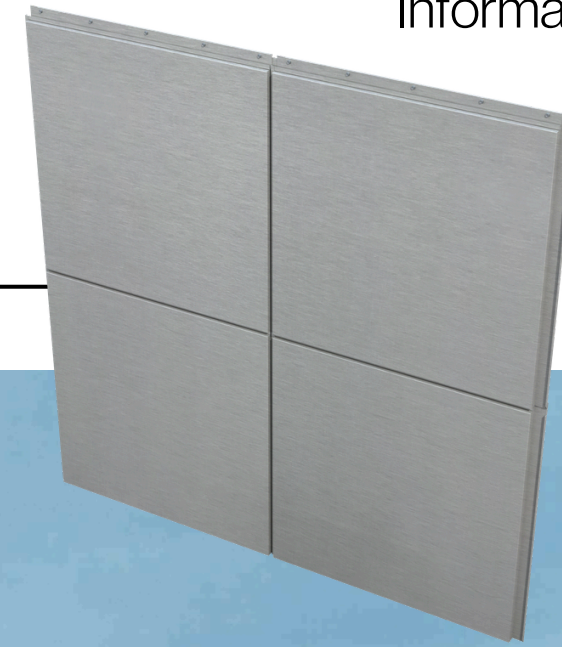
Technical Information:

- System Depth** - 1 1/2" nominal
- Material** - Aluminum
- Material Thickness** - 0.080" standard (other gauges available)
- Panel Joints** - 1/2" Horizontal, 5/8" Standard
- *Please consult technical advisor for custom panel joints*
- Finish** - Copper Anodized
- Finish Warranty** - 5 year standard (10 year available)
- Weight** - Less than 2 pounds per square foot

VMZINC®

VMZINC® Series Panels take inspiration from the distinctive tones and textures of nature to create an exclusive, refined, and unforgettable visual experience. Our Dri-Design® Panels made with VMZINC® are available in QUARTZ-ZINC®, ANTHRA-ZINC®, AZENGAR® and PIGMENTO® Series colors.

Technical Information:



System Depth - 1 1/4" nominal
Material - VMZINC®
Material Thickness - 1mm, 1.5mm
Panel Joints - 1/2" Horizontal, 5/8" Standard
Please consult technical advisor for custom panel joints
Surface Aspect - QUARTZ-ZINC®, ANTHRA-ZINC®, AZENGAR® and PIGMENTO® Series
Material Warranty - 5 year standard (10 year available)
Weight - Less than 3.5 pounds per square foot

ANTHRA-ZINC®



QUARTZ-ZINC®



PIGMENTO® Green



PIGMENTO® Blue



PIGMENTO® Red



PIGMENTO® Brown



AZENGAR®



Colors shown are representational only



For the latest and most accurate information, please visit our website.

Shadow Series

Add depth and definition to any architectural design. Individual panels can be extended at varying depths to create texture or a dynamic variation in patterns, all while keeping the substrate and weather barrier in the same plane.

Technical Information:

- System Depth** - 1 1/4" – 4" for Aluminum, Stainless Steel, Weathering Steel, 1 1/4" – 3" VMZINC® & Copper
- Material** - Aluminum, VMZINC®, Stainless Steel, Weathering Steel, Copper
- Material Thickness** - .080" and .125" Aluminum, 1mm VMZINC®, 1.5mm VMZINC® | 18, 16 GA Stainless Steel & Weathering Steel | 32, 48 Ounces Copper
- Panel Joints** - 1/2" Horizontal, 5/8" Standard
- *Please consult technical advisor for custom panel joints**
- Finish** - Available finishes based on material
- Weight** - Varies based on material type



For the latest and most accurate information, please visit our website.



Tapered Series

Angle in any direction with varying depths and slopes. This design flexibility empowers you to create a dynamic and unique surface on almost any façade, all without the necessity to modify the substrate or compromise the integrity of the weather barrier.



For the latest and most accurate information, please visit our website.

Technical Information:

System Depth - 1 1/4" – 4" for Aluminum, Stainless Steel, Weathering Steel, 1 1/4" – 3" VMZINC® & Copper

Material - Aluminum, VMZINC®, Stainless Steel, Weathering Steel, Copper

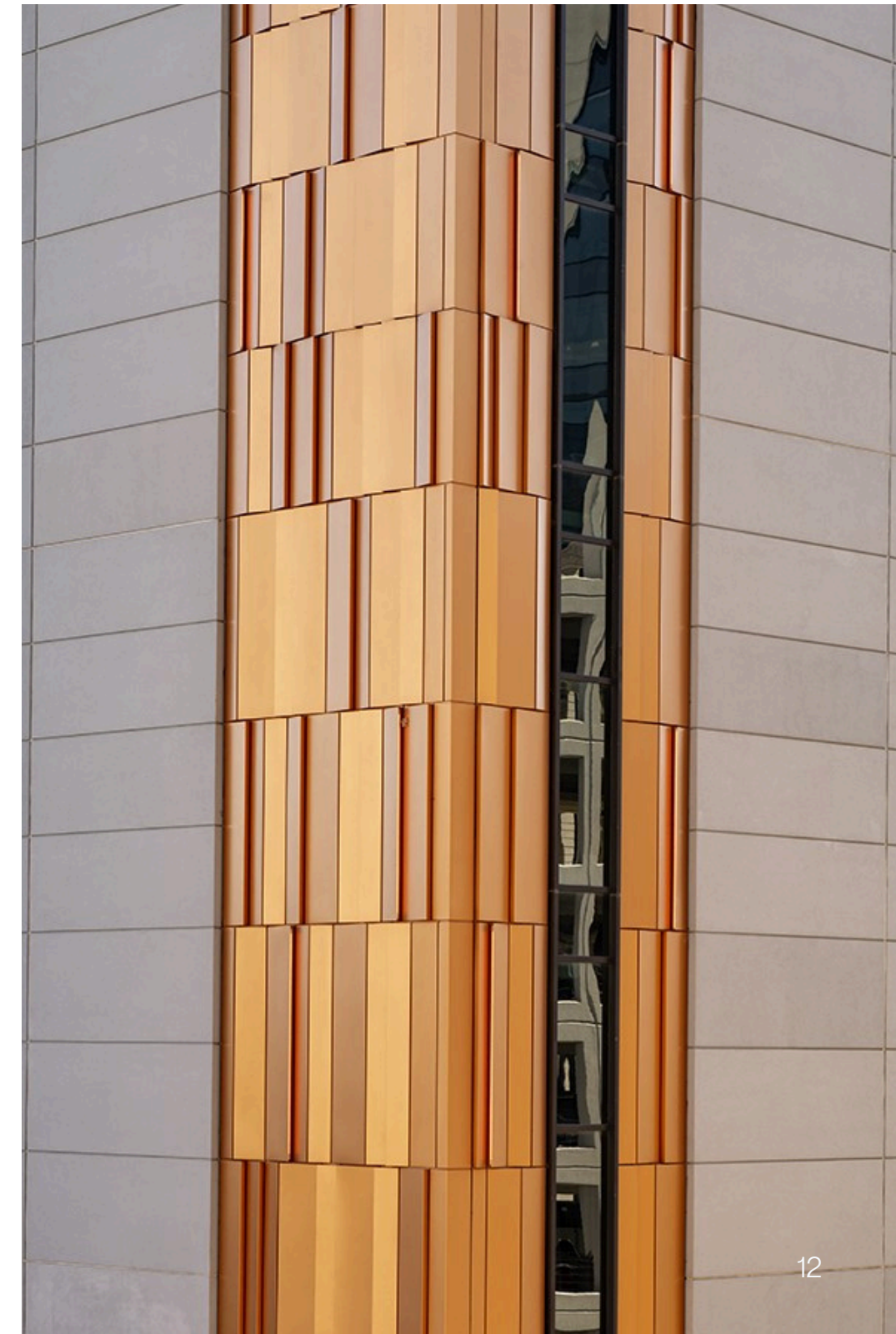
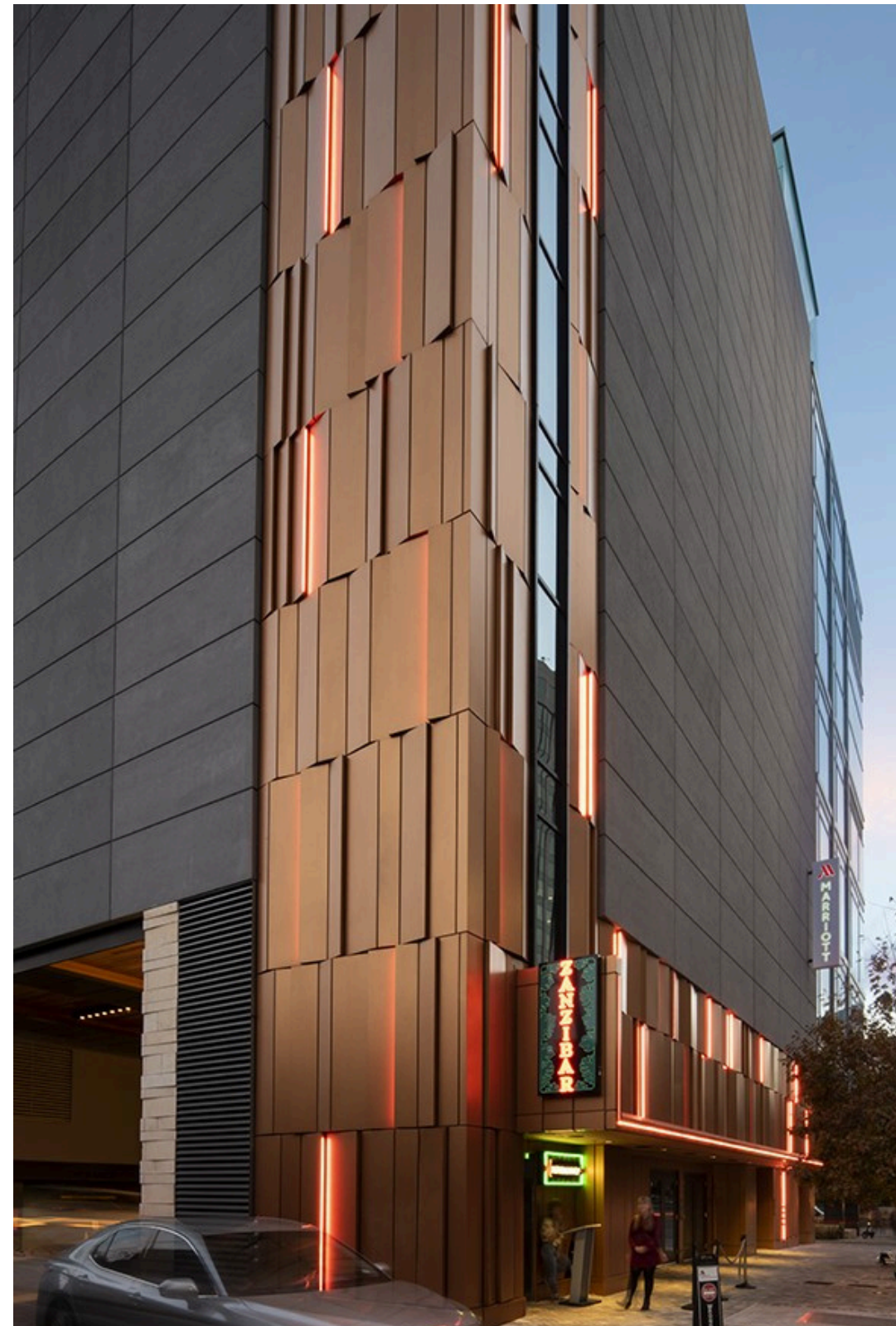
Material Thickness - .080" and .125" Aluminum, 1mm VMZINC®, 1.5mm VMZINC® | 18, 16 GA Stainless Steel & Weathering Steel | 32, 48 Ounces Copper

Panel Joints - 1/2" Horizontal, 5/8" Standard

Please consult technical advisor for custom panel joints

Finish - Available finishes based on material

Weight - Varies based on material type



Perforated

An impressive blend of practicality and visual appeal, the Perforated Panel Series seamlessly delivers essential airflow and/or shade to structures without compromising on style or design. These panels can be customized with virtually any shape and pattern, making them versatile for a wide range of applications.

Technical Information:

System Depth - 1 1/4" – 4" for Aluminum, Stainless Steel, Weathering Steel, 1 1/4" – 3" VMZINC® & Copper

Material - Aluminum, VMZINC®, Copper, Stainless Steel, Weathering Steel

Material Thickness - .080"-.125" Aluminum, 18,16 GA Weathering Steel & Stainless Steel

Consult technical advisor requirements for other available material & thicknesses

Panel Joints - 1/2" Horizontal Standard (up to 1")

5/8" Vertical Standard (1/8" - 1")

Finish - Finish options vary by material selection.

Weight - Varies based on material type



For the latest and most accurate information, please visit our website.

Perforated Imaging

Dri-Design® utilizes state-of-the-art computer-based manufacturing techniques alongside Perforated Imaging to intricately craft images through perforations. Through meticulous control of perforation size, placement, and density, we generate custom images that create dynamic interplays of light, dark, and shades in between.

Technical Information:

- System Depth** - 1 1/4" – 4" for Aluminum, Stainless Steel, Weathering Steel, 1 1/4" – 3" VMZINC® & Copper
- Material** - Aluminum, VMZINC®, Copper, Stainless Steel, Weathering Steel
- Material Thickness** - .080"-.125" Aluminum, 18,16 GA Weathering Steel & Stainless Steel
- *Consult technical advisor requirements for other available material & thicknesses**
- Panel Joints** - 1/2" Horizontal Standard (up to 1") 5/8" Vertical Standard (1/8" - 1")
- Finish** - Finish options vary by material selection.
- Weight** - Varies based on material type



For the latest and most accurate information, please visit our website.



Perforated Screen System

Introducing our latest perforated screen system panels, now available in larger module sizes for enhanced design flexibility.

Choose from dimensions of up to 48" x 126" or 126" x 48", crafted from high-quality .125" gauge aluminum. These panels offer a selection of premium finishes, including anodized or painted with a fluoropolymer finish, allowing you to achieve a world-class aesthetic for your projects.

Technical Information:

System Depth - 1.5" depth standard

Material - Aluminum

Material Thickness - 0.125"

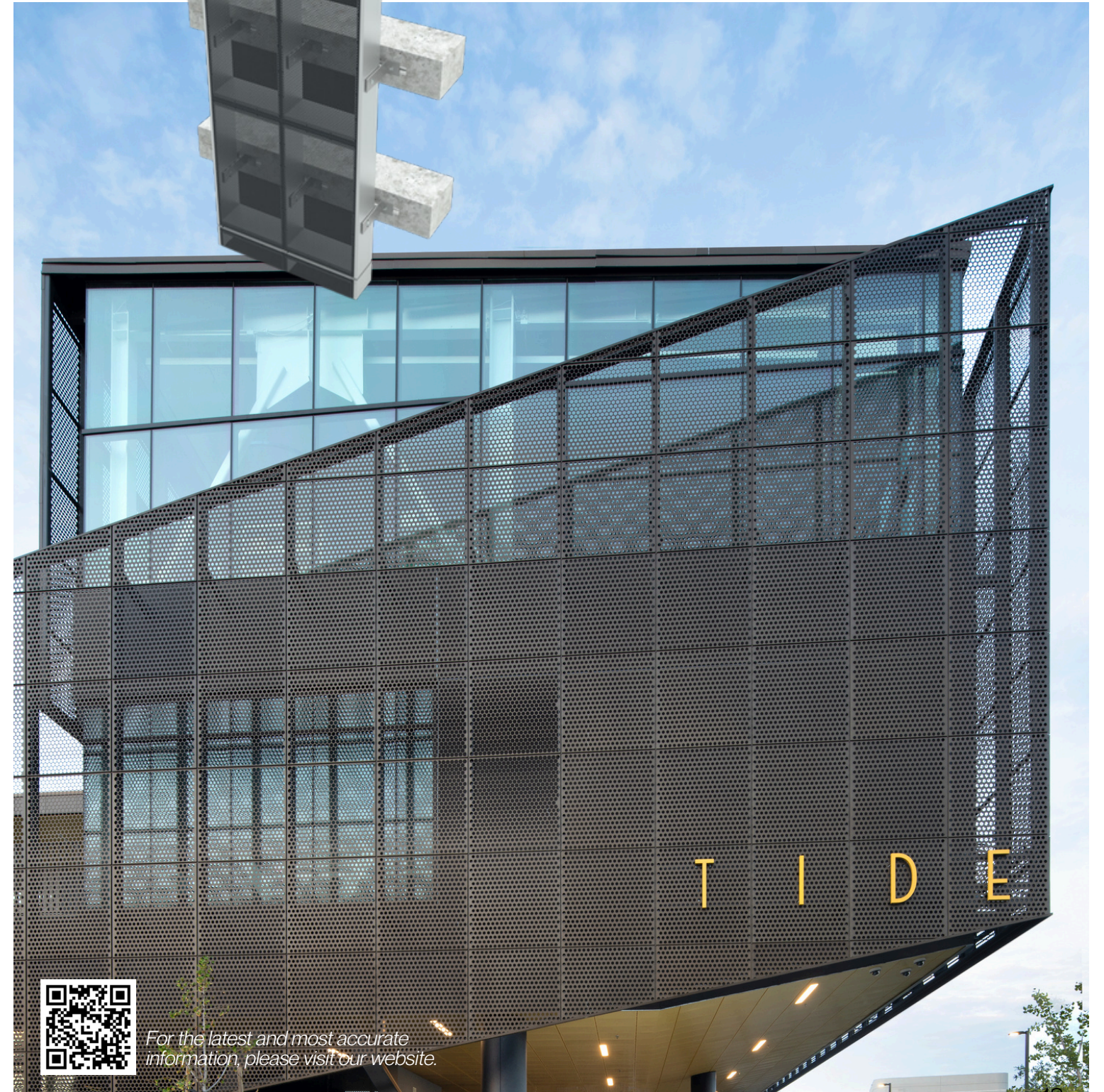
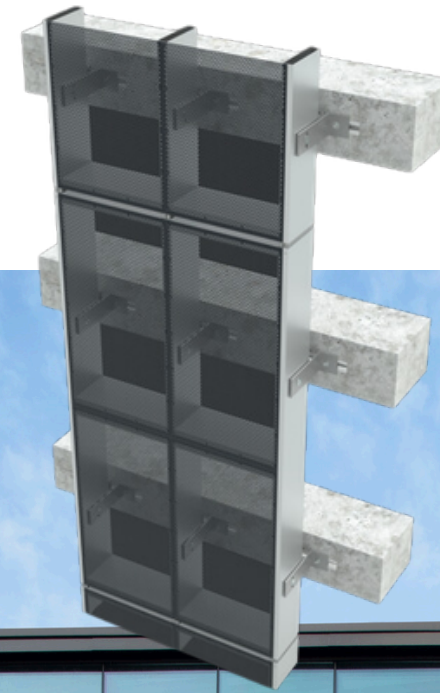
Panel Joints - Minimum 1/8" joint

Finish - Painted or Anodized

Finish Warranty - 20-year painted warranty, 5-year anodized warranty

Weight - 3 pounds per square foot

Contact Dri-Design Technical Department for other, customized options and materials.



For the latest and most accurate information, please visit our website.

Textured Series

Evoked a distinct visual ambiance with our Textured Panel System. Each corrugated panel, featuring perforations, is securely attached to a Dri-Design wall panel, arriving at your job site fully prepared for installation. Enjoy complete creative freedom by selecting your preferred pattern and finish, allowing you to envision and realize your design aspirations.

Technical Information:

System Depth - 6" depth standard

Material - Aluminum

Material Thickness - .080"

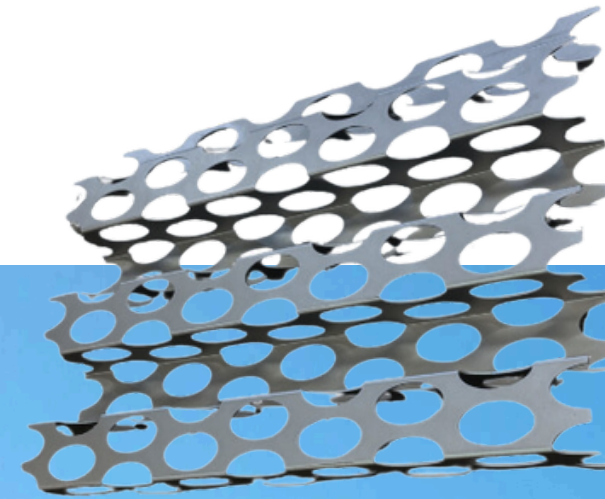
Panel Joints - 1/2" Horizontal Standard,

1/8" Vertical Standard

Please consult technical advisor for custom panel joints

Finish - Available finishes based on material

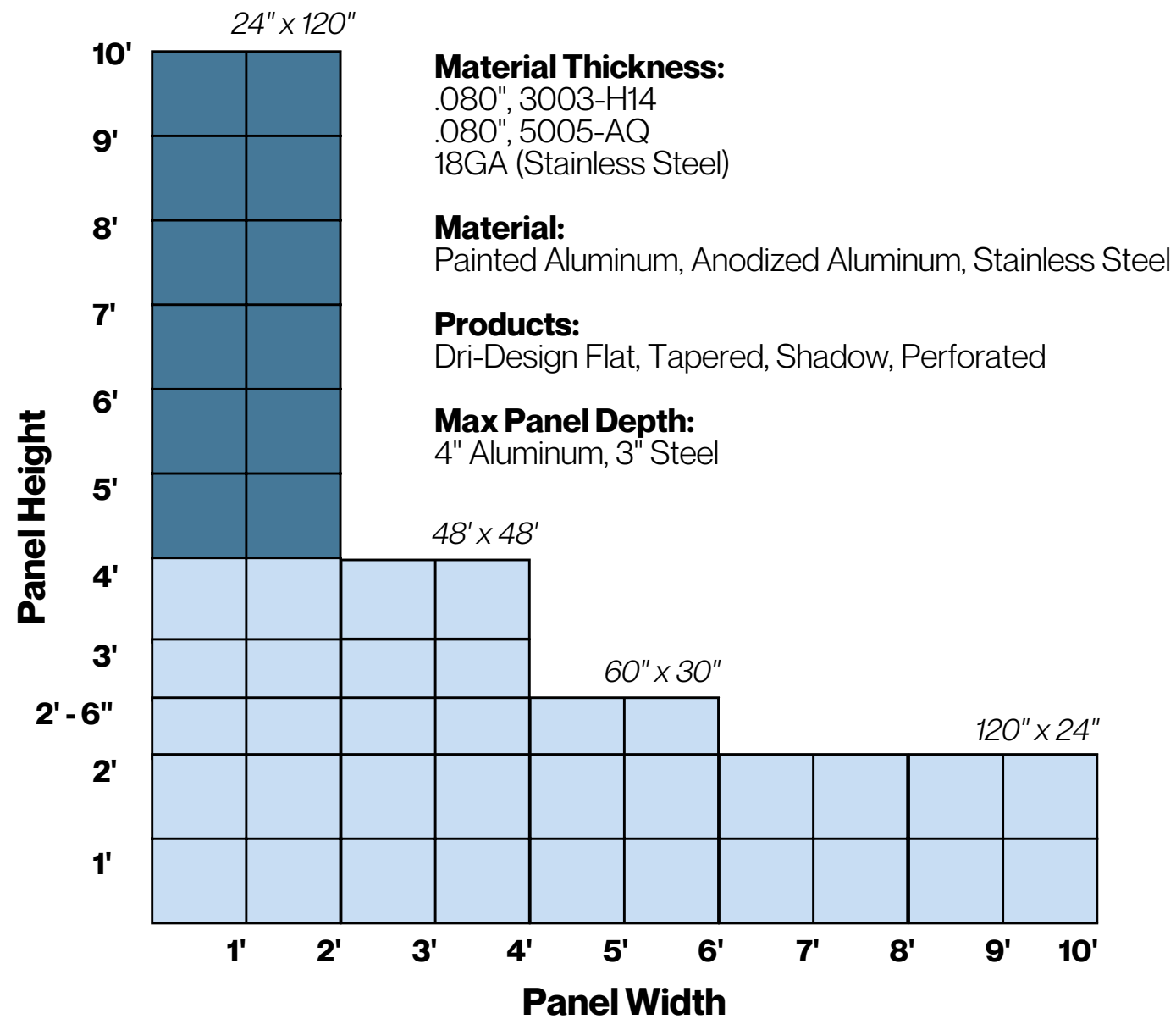
Weight - <5 pounds per square foot



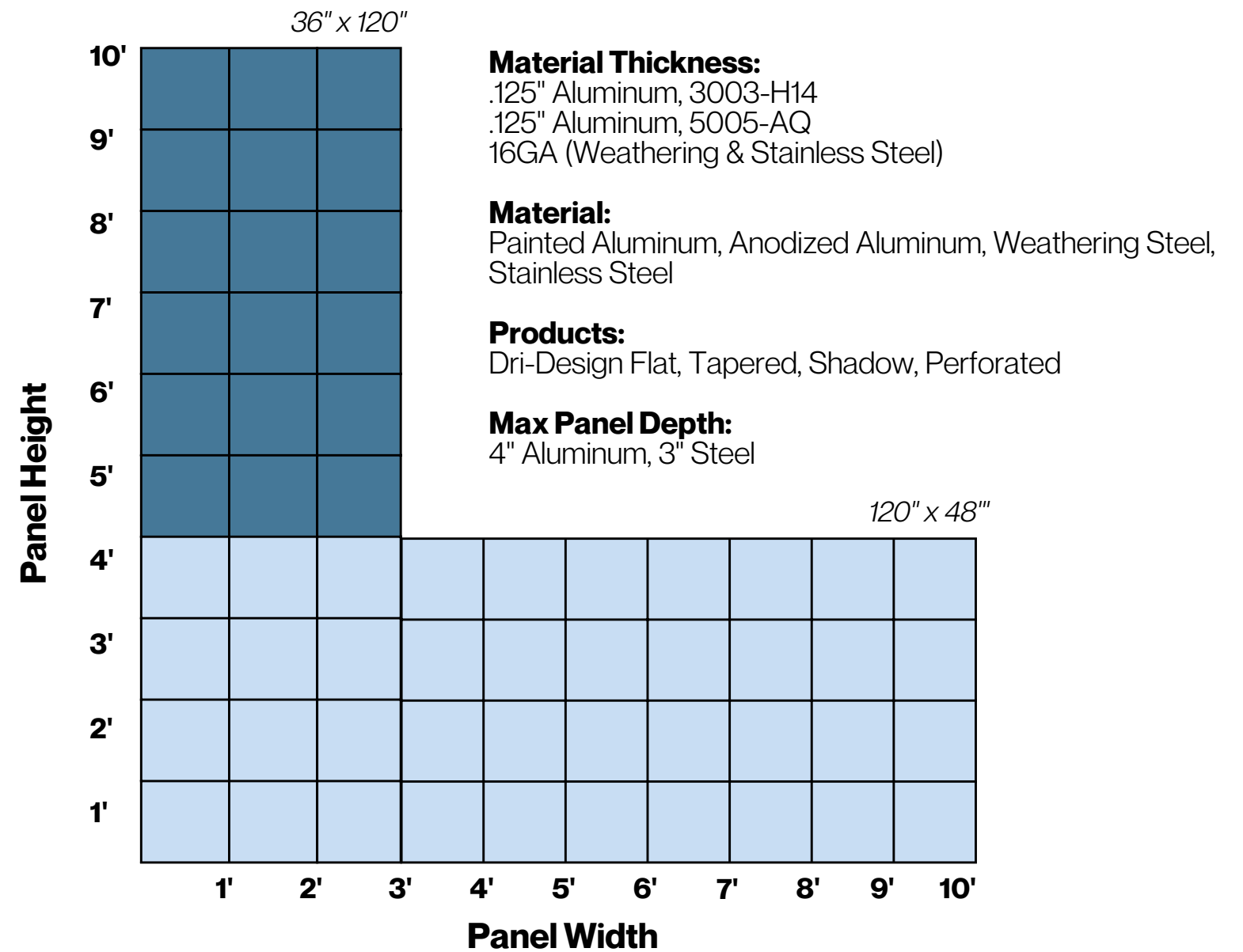
For the latest and most accurate information, please visit our website.



Size Limitations & Parameters: .080", .125"

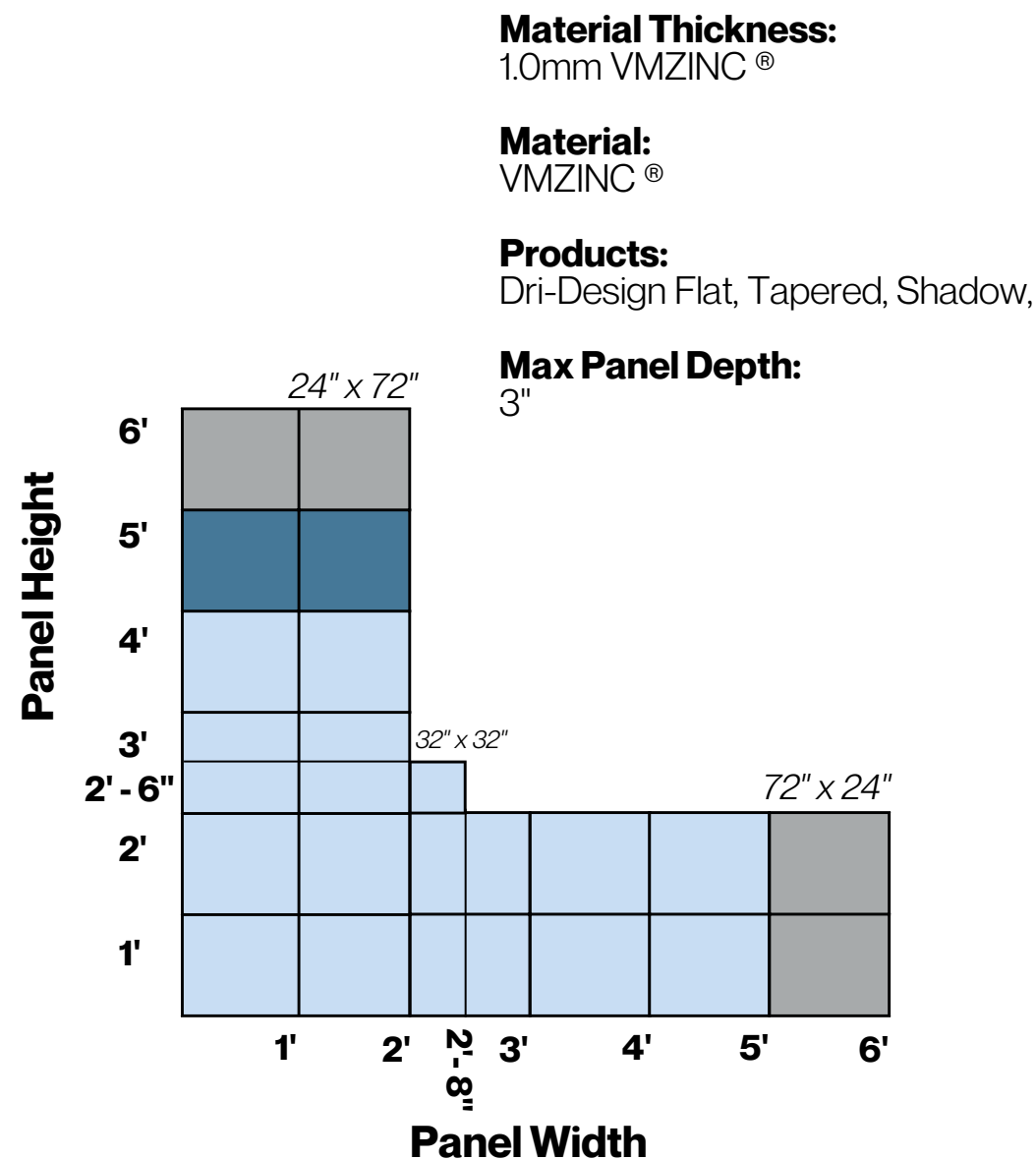





- Vertical panels 48" and taller require Wind Clips at 24" on center Max
 - Wind clips not required (Verification is required for locations in higher wind locations)
 Panels can be fabricated to any size within the colored zones
- *Shadow and Tapered Series panels depths will affect maximum panel sizes**

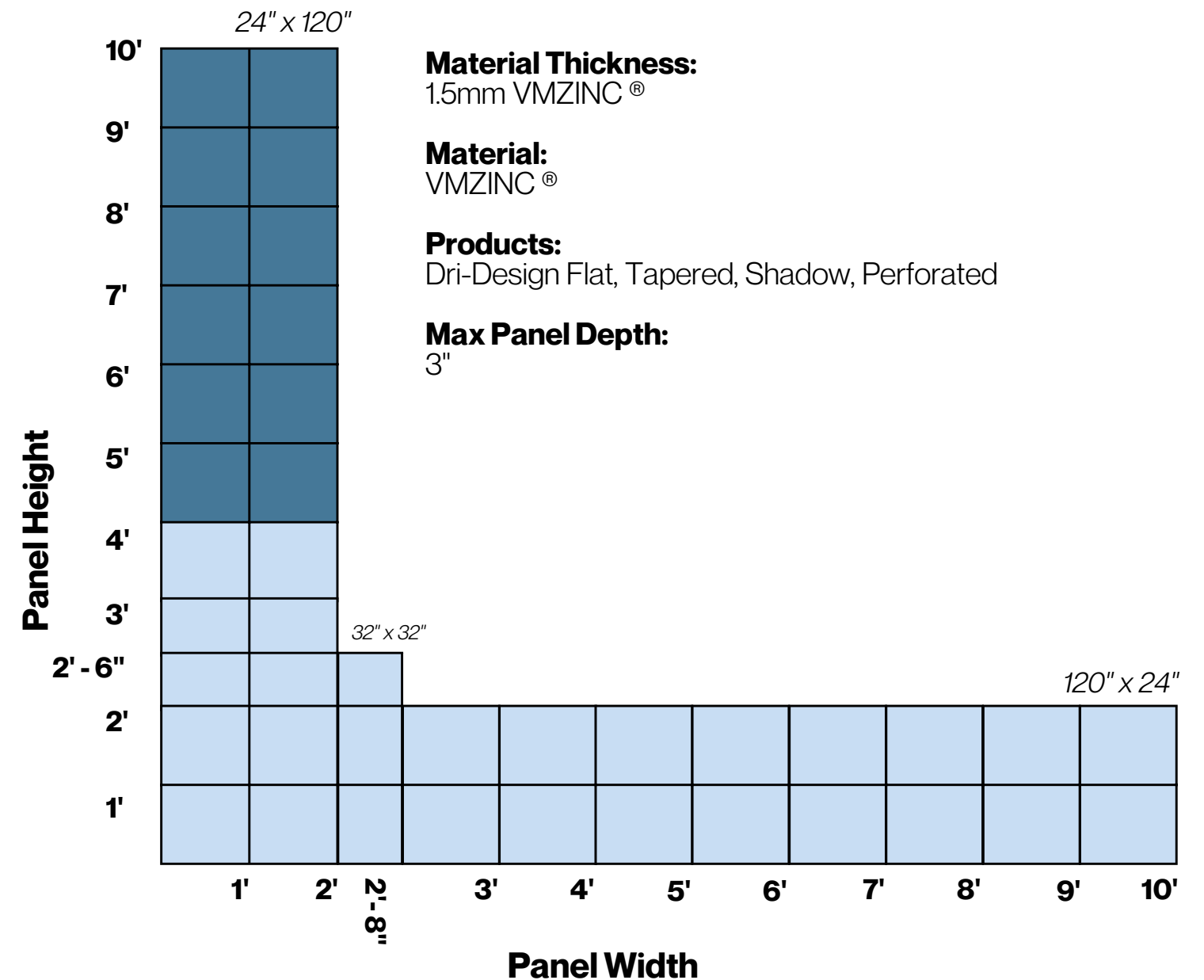



- Vertical panels 48" and taller require Wind Clips at 24" on center Max
 - Wind clips not required (Verification is required for locations in higher wind locations)
 Panels can be fabricated to any size within the colored zones
- *Shadow and Tapered Series panels depths will affect maximum panel sizes**

Size Limitations & Parameters: 1.0mm, 1.5mm VMZINC®



-  Indicates custom coil width
-  Vertical panels 48" and taller require Wind Clips at 24" on center Max
-  Wind clips not required (Verification is required for locations in higher wind locations)
Panels can be fabricated to any size within the colored zones
Shadow and Tapered Series panels depths will affect maximum panel sizes



-  Vertical panels 48" and taller require Wind Clips at 24" on center Max
-  Wind clips not required (Verification is required for locations in higher wind locations)
Panels can be fabricated to any size within the colored zones
Shadow and Tapered Series panels depths will affect maximum panel sizes

EN-V Collection

Engineered for value

Streamlined Production

Optimized Process, Uncompromised Quality

We haven't compromised on any aspect of the EN-V metal panel system. Instead, we have optimized our manufacturing process to achieve cost savings without compromising performance.

Affordable Customization

Extensive Palette of Colors, Finishes, and Materials

Now, you can enjoy the benefits of a customizable system without exceeding your budget. The EN-V Collection empowers you to use a system that meets your design needs at a price point that aligns with your budgetary requirements.



For the latest and most accurate information, please visit our website.



A80 Series

A50 Series

VS Series

WS Series

G Series

Z Series

Size Limitations & Parameters: *EN-V Collection*

A80 Series Available panel sizes

48"	18"	24"							
36"			36"						
30"		30"							
24"				48"	60"	72"	96"	120"	
22"				48"	60"	72"	96"	120"	
20"					60"	72"	96"	120"	
18"						72"	96"	120"	

VS Series Available panel sizes

72"	18"	24"							
60"	18"	24"							
48"	18"	24"							

G Series Available panel sizes

48"	18"	24"							
30"			30"						
24"				48"	60"	72"			
18"						72"			
16"				48"	60"	72"			

A50 Series Available panel sizes

16"					48"	60"	72"	96"	120"
-----	--	--	--	--	-----	-----	-----	-----	------

Quartz Z Series Available panel sizes

24"					48"	60"	72"		
16"					48"	60"	72"		

Anthra Z Series Available panel sizes

24"					48"	60"	72"		
-----	--	--	--	--	-----	-----	-----	--	--

WS Series Available panel sizes

48"	18"	24"							
36"				36"					
30"			30"						
24"					48"	60"	72"	96"	120"
22"					48"	60"	72"	96"	120"
20"						60"	72"	96"	120"
18"							72"	96"	120"

EN-V Attribute Comparison

Product Offering	Material	Thickness	Qty Sizes	Standard Colors	Premium Colors	Reveal Options	J Channel	Corner Trim	Flat Stock	Custom Trims	Other
A80	Aluminum	.080"	21	22	4	Staggered Aligned	Extrusion	Extrusion	✓	✓	Outside formed corner panels available in custom sizes (90-degree bend angle only)
A50	Aluminum	.050"	5	28	2	Staggered Aligned	Formed Sheet	Formed Sheet	✓	✓	Coil coated finish
G Series	Galvalume Steel	22 GA	10	6	N/A	Staggered Aligned	Formed Sheet	Formed Sheet	✓	✓	Natural Matte PVDF finish
WS Series	Type 4 Weathering Steel	18 GA	15	N/A	N/A	Staggered Aligned	Formed Sheet	Formed Sheet	✓	✓	<i>Weathering Steel may stain sidewalks and other building materials</i>
Z Series	Zinc	1.0mm	9	2	N/A	Staggered Aligned	Formed Sheet	Formed Sheet	✓	✓	N/A
VS	Aluminum	.080"	6	22	2	Staggered Aligned	Extrusion	Extrusion	✓	✓	Wind Clips Required; Not compatible with horizontal EN-V A80 Series

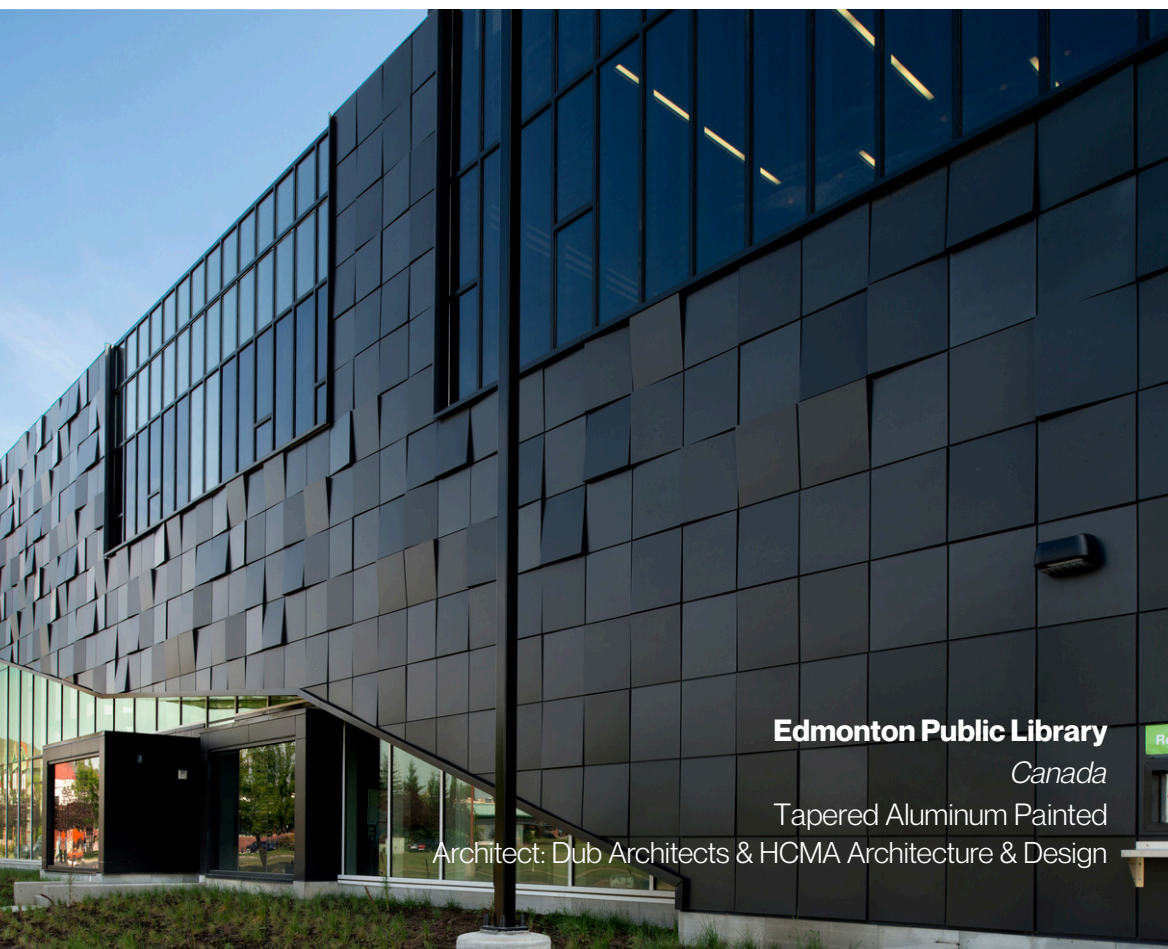
Project Showcase



Washington Iron Works
California
Weathering Steel
Architect: AC Martin



Saugus High School
Massachusetts
Tapered Series
Architect: HMFH Architects



Edmonton Public Library
Canada
Tapered Aluminum Painted
Architect: Dub Architects & HCMA Architecture & Design



4220 Duncan Avenue
Washington
Aluminum Painted
(color shifting paint)
Architect: HOK



Valleywise Health
Arizona
Shadow Series
Architect: Cuningham

Project Showcase

Hall Arts

Texas
Painted Aluminum
Architect: HKS



Adobe Campus

Utah
VMZINC® - QUARTZ-ZINC®
Architect: WRNS Studio



Tustin Legacy

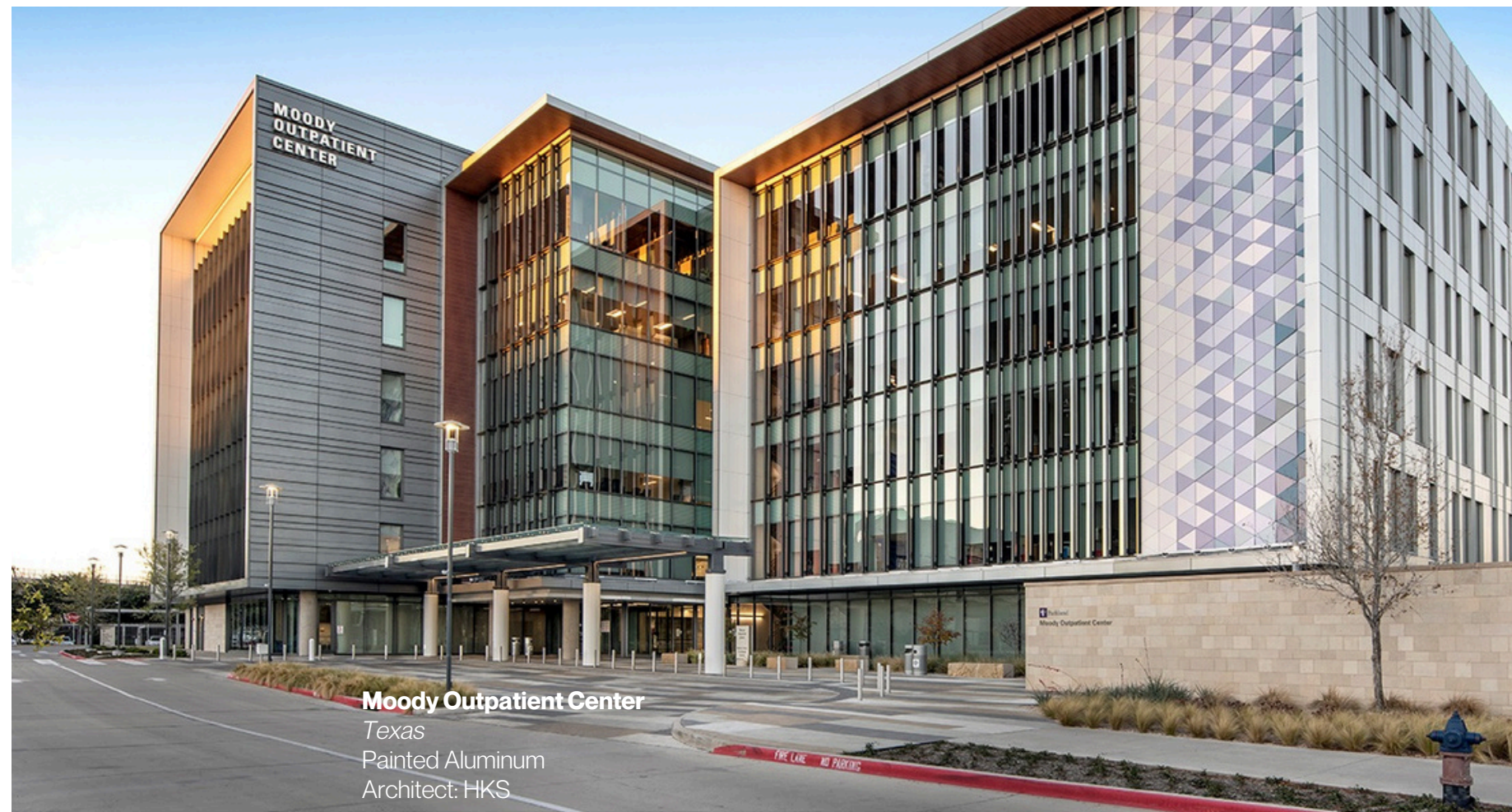
California
Painted Aluminum
Architect: PJHM Architects



Project Showcase



Nordstrom - Eaton Centre
Canada
Painted Aluminum (patterned)
Architect: Callison



Moody Outpatient Center
Texas
Painted Aluminum
Architect: HKS



Clemson Memorial Stadium
South Carolina
Painted Aluminum
Architect: LS3P



Wayne State - School of Medicine
Michigan
VMZINC® - ANTHRA-ZINC®
Architect: Hamilton Anderson



For the most up-to-date version of this document, please scan or [click here](#).

For the product offering in other markets please contact your local sales representative or visit www.dri-design.com.

To ensure you are viewing the most recent and accurate product information, please visit www.dri-design.com. Care has been taken to ensure that the contents of this publication are accurate, but Kingspan Limited and its subsidiary companies do not accept responsibility for errors or for information that is found to be misleading.

Suggestions for, or description of, the end use or application of products or methods of working are for information only and Dri-Design, Inc. accept no liability in respect thereof. Trademarks of the Dri-Design plc in the US, Canada and other countries.

© Dri-Design Inc., A Kingspan Group Company

Issue V5: 03/10/2026

